

anti- IL-6 antibody

Product Information

Catalog No.:	CAF50178
Size:	100µg
Form:	liquid
Purification:	Immunogen affinity purified
Purity:	≥95% as determined by SDS-PAGE
Host:	Rabbit
Clonality:	polyclonal
IsoType:	IgG
Storage:	PBS with 0.02% sodium azide and 50% glycerol pH 7.3, -20°C for 12 months (Avoid repeated freeze / thaw cycles.)

Background

Interleukin-6(IL-6) is an interleukin that acts as both a pro-inflammatory and anti-inflammatory cytokine. IL-6 protein is secreted by a variety of cell types including T cells and macrophages as phosphorylated and variably glycosylated molecule. IL-6 Plays an essential role in the final differentiation of B-cells into Ig-secreting cells involved in lymphocyte and monocyte differentiation. It induces myeloma and plasmacytoma growth and induces nerve cells differentiation Acts on B-cells, T-cells, hepatocytes, hematopoietic progenitor cells and cells of the CNS. IL-6 is also considered a myokine, a cytokine produced from muscle, and is elevated in response to muscle contraction. IL-6 has been shown to interact with interleukin-6 receptor and glycoprotein 130. Additionally, IL-6 is involved in hematopoiesis, bone metabolism, and cancer progression, and has been defined an essential role in directing transition from innate to acquired immunity.

Immunogen information

Immunogen:	interleukin 6(interferon, beta 2)
Synonyms:	B cell stimulatory factor 2, BSF 2, BSF2, CDF, CTL differentiation factor, HGF, HSF, Hybridoma growth factor, IFN beta 2, IFNB2, IL 6, IL6, IL-6, Interferon beta 2, Interleukin 6
Observed MW:	24 kDa
Uniprot ID :	P05231

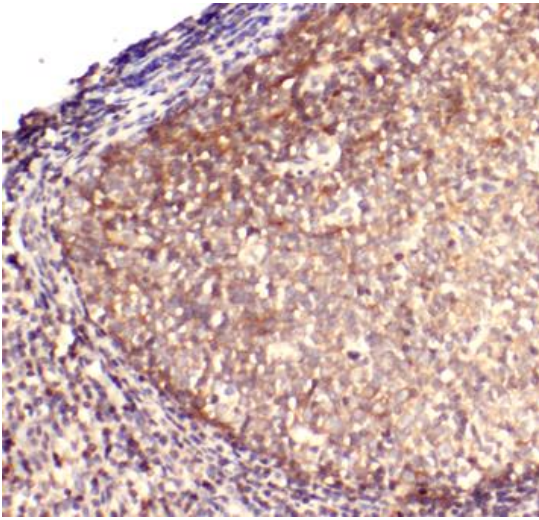
Application

Reactivity:	Human, Mouse, Rat
Tested Application:	ELISA, WB, IHC, IF
Recommended dilution:	WB: 1:500-1:1000; IHC: 1:50-1:200; IF: 1:50-1:200

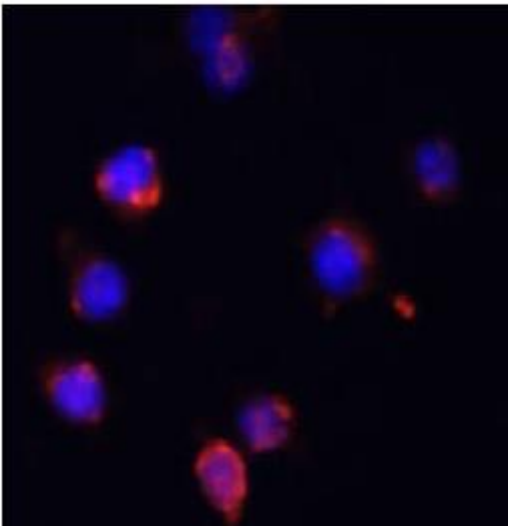
This Antibody is for Research Use Only. Not for Diagnostic Procedures.

This is a sample Antibody manual only. Always refer to the hard copy manual included in the Antibody for your experiment.

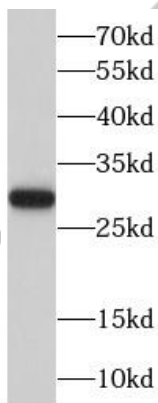
Image:



Immunohistochemistry of paraffin-embedded human tonsillitis tissue slide using CAF50178(IL6 Antibody) at dilution of 1:200



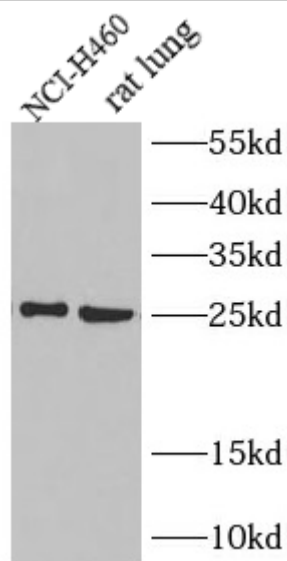
Immunofluorescence analysis of RAW264.7 cells using IL-6 antibody (CAF50178) at dilution of 1:100. Blue: DAPI for nuclear staining.



Recombinant protein were subjected to SDS PAGE followed by western blot with CAF50178(IL6 Antibody) at dilution of 1:600

This Antibody is for Research Use Only. Not for Diagnostic Procedures.

This is a sample Antibody manual only. Always refer to the hard copy manual included in the Antibody for your experiment.



Various lysates were subjected to SDS PAGE followed by western blot with CAF50178(II6 Antibody) at dilution of 1:600

ONLY

SAMPLE

This Antibody is for Research Use Only. Not for Diagnostic Procedures.

This is a sample Antibody manual only. Always refer to the hard copy manual included in the Antibody for your experiment.