

## anti- ING4 antibody

### Product Information

Catalog No.:	CAF50181
Size:	100µg
Form:	liquid
Purification:	Immunogen affinity purified
Purity:	≥95% as determined by SDS-PAGE
Host:	Rabbit
Clonality:	polyclonal
IsoType:	IgG
Storage:	PBS with 0.02% sodium azide and 50% glycerol pH 7.3, -20°C for 12 months (Avoid repeated freeze / thaw cycles.)

### Background

Component of the HBO1 complex which has a histone H4-specific acetyltransferase activity, a reduced activity toward histone H3 and is responsible for the bulk of histone H4 acetylation in vivo. Through chromatin acetylation it may function in DNA replication. May inhibit tumor progression by modulating the transcriptional output of signaling pathways which regulate cell proliferation. Can suppress brain tumor angiogenesis through transcriptional repression of RELA/NFKB3 target genes when complexed with RELA. May also specifically suppress loss of contact inhibition elicited by activated oncogenes such as MYC. Represses hypoxia inducible factor's(HIF) activity by interacting with HIF prolyl hydroxylase 2(EGLN1). Can enhance apoptosis induced by serum starvation in mammary epithelial cell line HC11(By similarity).

### Immunogen information

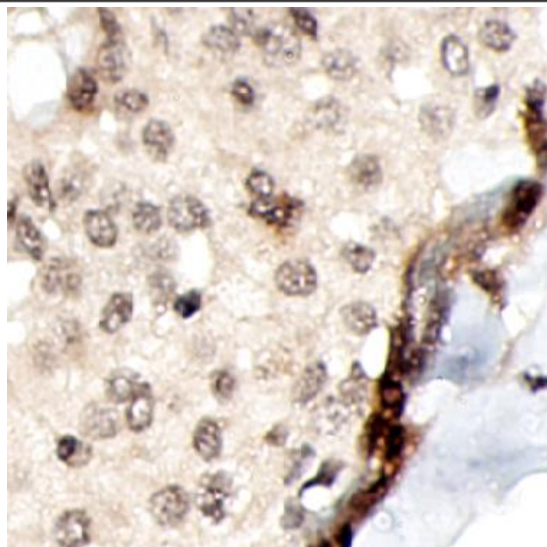
Immunogen:	inhibitor of growth family, member 4
Synonyms:	ING4, Inhibitor of growth protein 4, my036, p29ING4
Observed MW:	29kd
Uniprot ID :	Q9UNL4

### Application

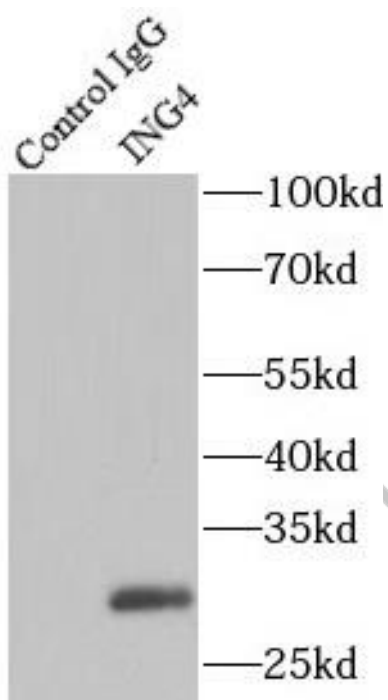
Reactivity:	Human, Mouse, Rat
Tested Application:	ELISA, WB, IHC, IF, IP
Recommended dilution:	WB: 1:500-1:2000; IHC: 1:20-1:200; IF: 1:20-1:200; IP: 1:200-1:2000
Image:	

**This Antibody is for Research Use Only. Not for Diagnostic Procedures.**

This is a sample Antibody manual only. Always refer to the hard copy manual included in the Antibody for your experiment.



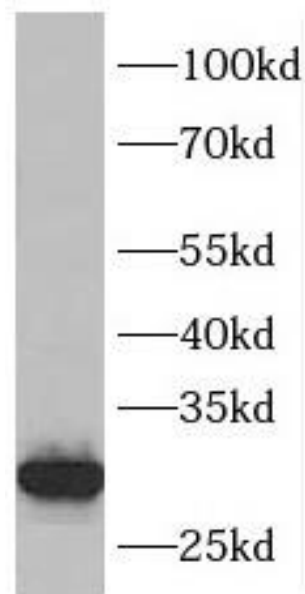
Immunohistochemistry of paraffin-embedded human brain using CAF50181(ING4 antibody) at dilution of 1:100



IP Result of anti-ING4 (IP:CAF50181, 3ug; Detection:CAF50181 1:200) with HEK-293 cells lysate 2700ug.

**This Antibody is for Research Use Only. Not for Diagnostic Procedures.**

This is a sample Antibody manual only. Always refer to the hard copy manual included in the Antibody for your experiment.



HeLa cells were subjected to SDS PAGE followed by western blot with CAF50181(ING4 antibody) at dilution of 1:1000

ONLY

SAMPLE

**This Antibody is for Research Use Only. Not for Diagnostic Procedures.**

This is a sample Antibody manual only. Always refer to the hard copy manual included in the Antibody for your experiment.