

## anti- INPP5E antibody

### Product Information

Catalog No.:	CAF50183
Size:	100µg
Form:	liquid
Purification:	Immunogen affinity purified
Purity:	≥95% as determined by SDS-PAGE
Host:	Rabbit
Clonality:	polyclonal
Clone ID:	None
IsoType:	IgG
Storage:	PBS with 0.02% sodium azide and 50% glycerol pH 7.3, -20°C for 12 months (Avoid repeated freeze / thaw cycles.)

### Background

Converts phosphatidylinositol 3,4,5-trisphosphate(PtdIns 3,4,5-P3) to PtdIns-P2, and phosphatidylinositol 4,5-bisphosphate to phosphatidylinositol 4-phosphate. Specific for lipid substrates, inactive towards water soluble inositol phosphates.

### Immunogen information

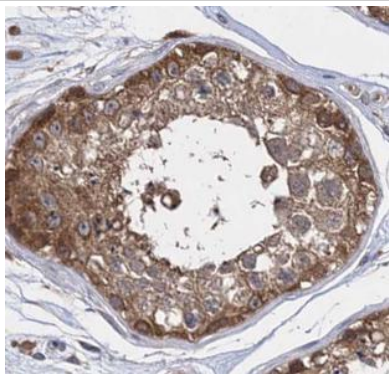
Immunogen:	inositol polyphosphate-5-phosphatase, 72 kDa
Synonyms:	INPP5E, PPI5PIV
Observed MW:	64-66 kDa
Uniprot ID :	Q9NRR6

### Application

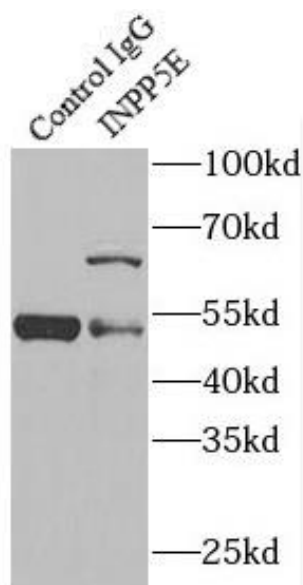
Reactivity:	Human, Mouse, Rat
Tested Application:	ELISA, WB, IHC, IF, IP
Recommended dilution:	WB: 1:500-1:2000; IP: 1:500-1:2000; IHC: 1:20-1:200; IF: 1:20-1:200
Image:	

**This Antibody is for Research Use Only. Not for Diagnostic Procedures.**

This is a sample Antibody manual only. Always refer to the hard copy manual included in the Antibody for your experiment.



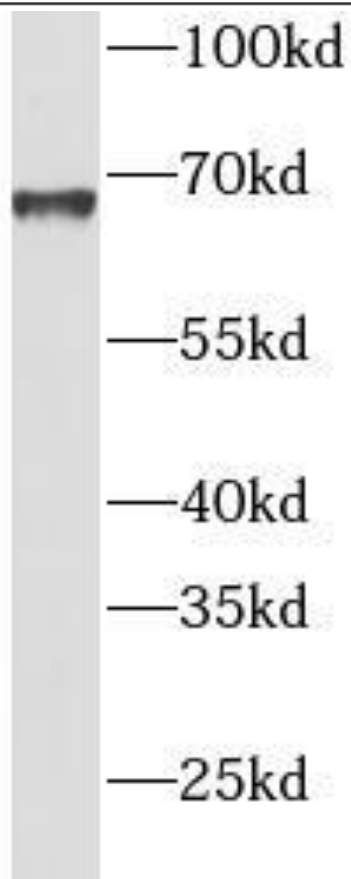
Immunohistochemistry of paraffin-embedded human testis using CAF50183(INPP5E antibody) at dilution of 1:50



IP Result of anti-INPP5E (IP:CAF50183, 3ug; Detection:CAF50183 1:1000) with HEK-293 cells lysate 1000ug.

**This Antibody is for Research Use Only. Not for Diagnostic Procedures.**

This is a sample Antibody manual only. Always refer to the hard copy manual included in the Antibody for your experiment.



SH-SY5Y cells were subjected to SDS PAGE followed by western blot with CAF50183(INPP5E antibody) at dilution of 1:1000

ONLY

SAMPLE

**This Antibody is for Research Use Only. Not for Diagnostic Procedures.**

This is a sample Antibody manual only. Always refer to the hard copy manual included in the Antibody for your experiment.