

anti- Integrin alpha-4 antibody

Product Information

| | |
|---------------|---|
| Catalog No.: | CAF50186 |
| Size: | 100µg |
| Form: | liquid |
| Purification: | Immunogen affinity purified |
| Purity: | ≥95% as determined by SDS-PAGE |
| Host: | Rabbit |
| Clonality: | polyclonal |
| Clone ID: | None |
| IsoType: | IgG |
| Storage: | PBS with 0.02% sodium azide and 50% glycerol pH 7.3, -20°C for 12 months (Avoid repeated freeze / thaw cycles.) |

Background

ITGA4, also named as CD49D, belongs to the integrin alpha chain family. ITGA4 is a receptor for fibronectin, VCAM1 and MADCAM1. ITGA4 recognizes one or more domains within the alternatively spliced CS-1 and CS-5 regions of fibronectin. It recognizes the sequence Q-I-D-S in VCAM1. It recognizes the sequence L-D-T in MADCAM1. On activated endothelial cells ITGA4 triggers homotypic aggregation for most VLA-4-positive leukocyte cell lines. It may also participate in cytolytic T-cell interactions with target cells.

Immunogen information

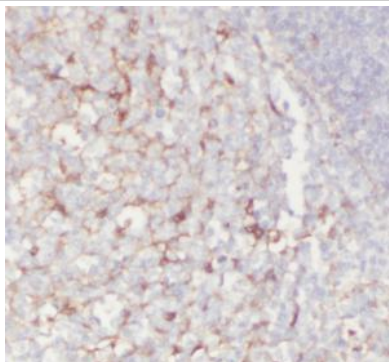
| | |
|--------------|---|
| Immunogen: | integrin, alpha 4 |
| Synonyms: | CD49D, IA4, Integrin alpha 4, Integrin alpha IV, ITGA4, VLA 4 subunit alpha |
| Observed MW: | 140 kDa |
| Uniprot ID : | P13612 |

Application

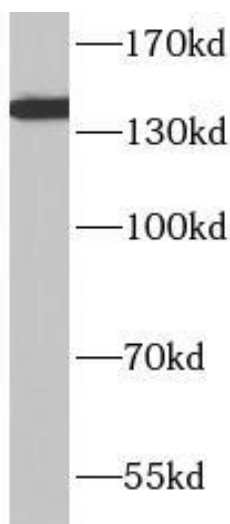
| | |
|-----------------------|----------------------------------|
| Reactivity: | Human, Mouse, Rat |
| Tested Application: | ELISA, WB, IHC |
| Recommended dilution: | WB: 1500-1:2000; IHC: 1:20-1:200 |
| Image: | |

This Antibody is for Research Use Only. Not for Diagnostic Procedures.

This is a sample Antibody manual only. Always refer to the hard copy manual included in the Antibody for your experiment.



Immunohistochemistry of paraffin-embedded human tonsillitis tissue slide using CAF50186(Integrin alpha-4 Antibody) at dilution of 1:50



Jurkat cells were subjected to SDS PAGE followed by western blot with CAF50186(ITGA4 antibody) at dilution of 1:1000

ONLY

SAMPLE

This Antibody is for Research Use Only. Not for Diagnostic Procedures.

This is a sample Antibody manual only. Always refer to the hard copy manual included in the Antibody for your experiment.