

## anti- Integrin beta-1 antibody

### Product Information

Catalog No.:	CAF50187
Size:	100µg
Form:	liquid
Purification:	Immunogen affinity purified
Purity:	≥95% as determined by SDS-PAGE
Host:	Rabbit
Clonality:	polyclonal
Clone ID:	None
IsoType:	IgG
Storage:	PBS with 0.02% sodium azide and 50% glycerol pH 7.3, -20°C for 12 months (Avoid repeated freeze / thaw cycles.)

### Background

Integrin beta-1 (ITGB1), also named as CD29, is a 130 kDa single chain type I glycoprotein that is expressed in a heterodimeric complex with one of six distinct  $\alpha$  subunits, comprising the very late activation antigen (VLA) subfamily of adhesion receptors. It is one of the essential surface molecules expressed on human MSC from bone marrow and other sources. The  $\beta$ 1 subunit is also broadly expressed on lymphocytes and monocytes, weakly expressed on granulocytes, and not expressed on erythrocytes. These receptors are involved in a variety of cell-cell and cell-matrix interactions.

### Immunogen information

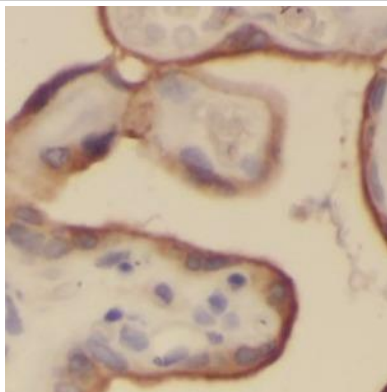
Immunogen:	integrin, beta 1
Synonyms:	CD29, FNRB, GPIIA, Integrin beta 1, ITB1, ITGB1, MDF2, MSK12, VLA 4 subunit beta, VLA BETA, VLAB
Observed MW:	130 kDa, 100 kDa
Uniprot ID :	P05556

### Application

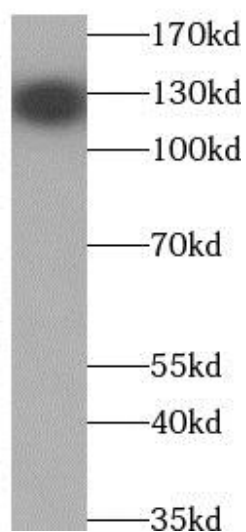
Reactivity:	Human, Mouse, Rat
Tested Application:	ELISA, WB, IHC
Recommended dilution:	WB: 1:1000-1:4000; IHC: 1:50-1:500
Image:	

**This Antibody is for Research Use Only. Not for Diagnostic Procedures.**

This is a sample Antibody manual only. Always refer to the hard copy manual included in the Antibody for your experiment.



Immunohistochemistry of paraffin-embedded human placenta tissue slide using CAF50187(Integrin beta-1 Antibody) at dilution of 1:200



HT-1080 cells were subjected to SDS PAGE followed by western blot with CAF50187(Integrin beta-1 antibody) at dilution of 1:2000

SAMPLE

ONLY

**This Antibody is for Research Use Only. Not for Diagnostic Procedures.**

This is a sample Antibody manual only. Always refer to the hard copy manual included in the Antibody for your experiment.