

anti- IRF6 antibody

Product Information

Catalog No.:	CAF50190
Size:	100µg
Form:	liquid
Purification:	Immunogen affinity purified
Purity:	≥95% as determined by SDS-PAGE
Host:	Rabbit
Clonality:	polyclonal
Clone ID:	None
IsoType:	IgG
Storage:	PBS with 0.02% sodium azide and 50% glycerol pH 7.3, -20°C for 12 months (Avoid repeated freeze / thaw cycles.)

Background

Probable DNA-binding transcriptional activator. Key determinant of the keratinocyte proliferation-differentiation switch involved in appropriate epidermal development(By similarity). Plays a role in regulating mammary epithelial cell proliferation(By similarity). May regulate WDR65 transcription(By similarity).

Immunogen information

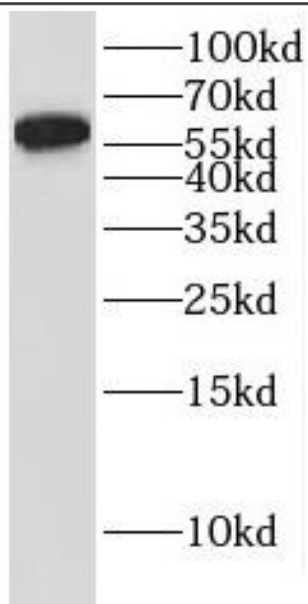
Immunogen:	interferon regulatory factor 6
Synonyms:	IRF6,LPS,OFC6,PIT,PPS,PPS1,VWS,VWS1
Observed MW:	55-65 kDa
Uniprot ID :	O14896

Application

Reactivity:	Human, Mouse, Rat
Tested Application:	ELISA, WB, IHC
Recommended dilution:	WB: 1:500-1:2000; IHC: 1:20-1:200
Image:	

This Antibody is for Research Use Only. Not for Diagnostic Procedures.

This is a sample Antibody manual only. Always refer to the hard copy manual included in the Antibody for your experiment.



PC-3 cells were subjected to SDS PAGE followed by western blot with CAF50190(IRF6 Antibody) at dilution of 1:600

ONLY

SAMPLE

This Antibody is for Research Use Only. Not for Diagnostic Procedures.

This is a sample Antibody manual only. Always refer to the hard copy manual included in the Antibody for your experiment.