

anti- KEAP1 antibody

Product Information

Catalog No.:	CAF50193
Size:	100µg
Form:	liquid
Purification:	Immunogen affinity purified
Purity:	≥95% as determined by SDS-PAGE
Host:	Rabbit
IsoType:	IgG
Storage:	PBS with 0.02% sodium azide and 50% glycerol pH 7.3 , -20°C for 24 months (Avoid repeated freeze / thaw cycles.)

Background

This gene encodes a protein containing KELCH-1 like domains, as well as a BTB/POZ domain. Kelch-like ECH-associated protein 1 interacts with NF-E2-related factor 2 in a redox-sensitive manner and the dissociation of the proteins in the cytoplasm is followed by transportation of NF-E2-related factor 2 to the nucleus. This interaction results in the expression of the catalytic subunit of gamma-glutamylcysteinesynthetase. Two alternatively spliced transcript variants encoding the same isoform have been found for this gene.

Immunogen information

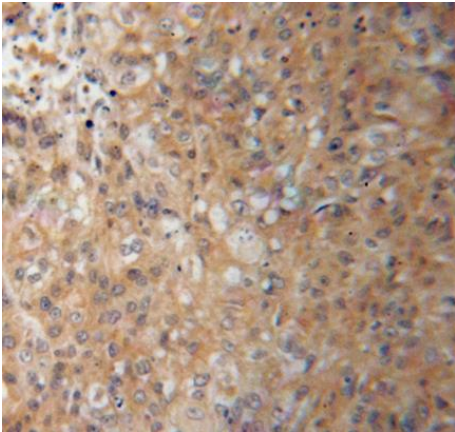
Immunogen:	kelch-like ECH-associated protein 1
Synonyms:	Cytosolic inhibitor of Nrf2, INrf2, KEAP1, Kelch like protein 19, KIAA0132, KLHL19
Calculated MW:	55-80 kDa
UniprotID :	Q14145

Application

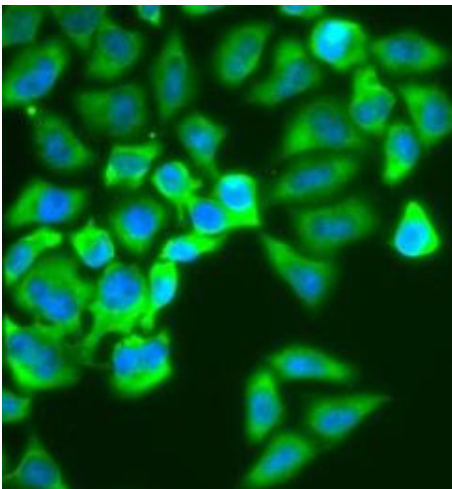
Specificity:	Human, Mouse, Rat
Tested Application:	ELISA, IHC, IF, WB
Recommended dilution:	WB: 1:500 - 1:2000; IHC: 1:50 - 1:200; IF: 1:50 - 1:200
Image:	

This Antibody is for Research Use Only. Not for Diagnostic Procedures.

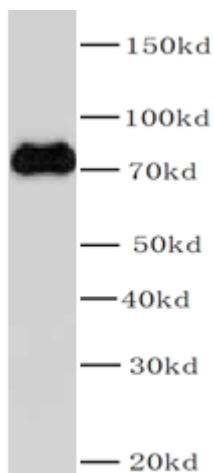
This is a sample Antibody manual only. Always refer to the hard copy manual included in the Antibody for your experiment.



Immunohistochemistry of paraffin-embedded human lung cancer using CAF50193(KEAP1 antibody) at dilution of 1:100



Immunofluorescence analysis of A549 cells using CAF50193(KEAP1 antibody).



HepG2 cells were subjected to SDS PAGE followed by western blot with CAF50193(KEAP1 antibody) at dilution of 1:1000

This Antibody is for Research Use Only. Not for Diagnostic Procedures.

This is a sample Antibody manual only. Always refer to the hard copy manual included in the Antibody for your experiment.