

anti- LAMP1 antibody

Product Information

Catalog No.:	CAF50197
Size:	100µg
Form:	liquid
Purification:	Immunogen affinity purified
Purity:	≥95% as determined by SDS-PAGE
Host:	Rabbit
Clonality:	polyclonal
Clone ID:	None
IsoType:	IgG
Storage:	PBS with 0.02% sodium azide and 50% glycerol pH 7.3, -20°C for 12 months (Avoid repeated freeze / thaw cycles.)

Background

The protein encoded by this gene is a member of a family of membrane glycoproteins. This glycoprotein provides selectins with carbohydrate ligands. It may also play a role in tumor cell metastasis.

Immunogen information

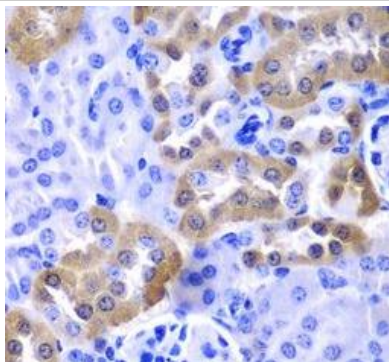
Immunogen:	lysosomal-associated membrane protein 1
Synonyms:	CD107a, LAMPA, LGP120
Observed MW:	120 kDa
Uniprot ID :	P11279

Application

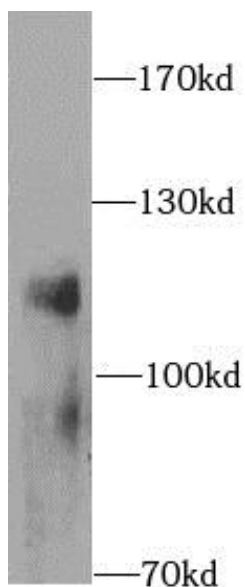
Reactivity:	Human, Mouse
Tested Application:	ELISA, WB, IHC, IF
Recommended dilution:	WB: 1:500 - 1:2000; IHC: 1:50 - 1:200; IF: 1:50 - 1:200
Image:	

This Antibody is for Research Use Only. Not for Diagnostic Procedures.

This is a sample Antibody manual only. Always refer to the hard copy manual included in the Antibody for your experiment.



Immunohistochemistry of paraffin-embedded mouse kidney tissue slide using CAF50197(CD107a Antibody) at dilution of 1:200



RAW 264.7 cells were subjected to SDS PAGE followed by western blot with CAF50197(CD107a Antibody) at dilution of 1:1000

SAMPLE

ONLY

This Antibody is for Research Use Only. Not for Diagnostic Procedures.

This is a sample Antibody manual only. Always refer to the hard copy manual included in the Antibody for your experiment.