

## anti- LGI1 antibody

### Product Information

Catalog No.:	CAF50201
Size:	100µg
Form:	liquid
Purification:	Immunogen affinity purified
Purity:	≥95% as determined by SDS-PAGE
Host:	Rabbit
Clonality:	polyclonal
Clone ID:	None
IsoType:	IgG
Storage:	PBS with 0.02% sodium azide and 50% glycerol pH 7.3, -20°C for 12 months (Avoid repeated freeze / thaw cycles.)

### Background

Regulates voltage-gated potassium channels assembled from KCNA1, KCNA4 and KCNAB1. It slows down channel inactivation by precluding channel closure mediated by the KCNAB1 subunit. Ligand for ADAM22 that positively regulates synaptic transmission mediated by AMPA-type glutamate receptors (By similarity). Plays a role in suppressing the production of MMP1/3 through the phosphatidylinositol 3-kinase/ERK pathway. May play a role in the control of neuroblastoma cell survival.

### Immunogen information

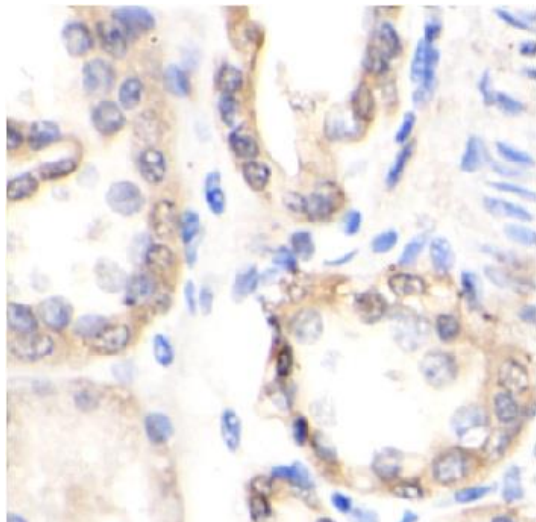
Immunogen:	leucine-rich, glioma inactivated 1
Synonyms:	EPT
Observed MW:	64 kDa, 58 kDa
Uniprot ID :	O95970

### Application

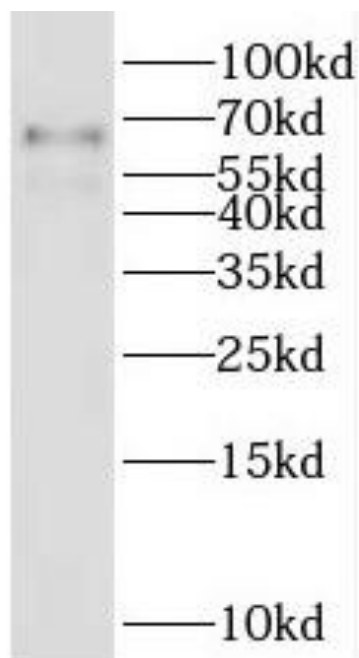
Reactivity:	Human, Mouse, Rat
Tested Application:	ELISA, WB, IHC
Recommended dilution:	WB: 1:500-1:2000; IHC: 1:50-1:200
Image:	

**This Antibody is for Research Use Only. Not for Diagnostic Procedures.**

This is a sample Antibody manual only. Always refer to the hard copy manual included in the Antibody for your experiment.



Immunohistochemistry of paraffin-embedded human breast cancer tissue slide using CAF50201(LGI1 Antibody) at dilution of 1:50



human brain tissue were subjected to SDS PAGE followed by western blot with CAF50201(LGI1 antibody) at dilution of 1:300

**This Antibody is for Research Use Only. Not for Diagnostic Procedures.**

This is a sample Antibody manual only. Always refer to the hard copy manual included in the Antibody for your experiment.