

anti- LGR5 antibody

Product Information

Catalog No.:	CAF50202
Size:	100µg
Form:	liquid
Purification:	Immunogen affinity purified
Purity:	≥95% as determined by SDS-PAGE
Host:	Rabbit
Clonality:	polyclonal
Clone ID:	None
IsoType:	IgG
Storage:	PBS with 0.02% sodium azide and 50% glycerol pH 7.3, -20°C for 12 months (Avoid repeated freeze / thaw cycles.)

Background

Receptor for R-spondins that potentiates the canonical Wnt signaling pathway and acts as a stem cell marker of the intestinal epithelium and the hair follicle. Upon binding to R-spondins(RSPO1, RSPO2, RSPO3 or RSPO4), associates with phosphorylated LRP6 and frizzled receptors that are activated by extracellular Wnt receptors, triggering the canonical Wnt signaling pathway to increase expression of target genes. In contrast to classical G-protein coupled receptors, does not activate heterotrimeric G-proteins to transduce the signal. Involved in the development and/or maintenance of the adult intestinal stem cells during postembryonic development.

Immunogen information

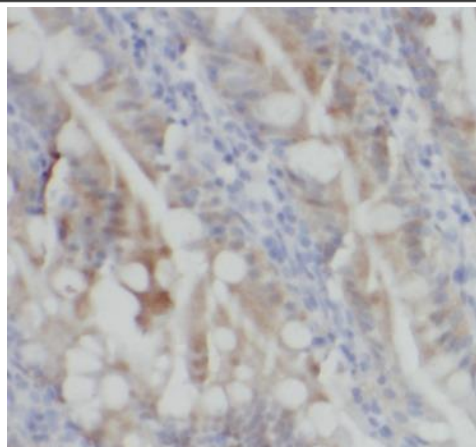
Immunogen:	leucine-rich repeat-containing G protein-coupled receptor 5
Synonyms:	FEX, G protein coupled receptor 49, G protein coupled receptor 67, GPR49, GPR67, GRP49, HG38, LGR5
Observed MW:	92-120kd
Uniprot ID :	O75473

Application

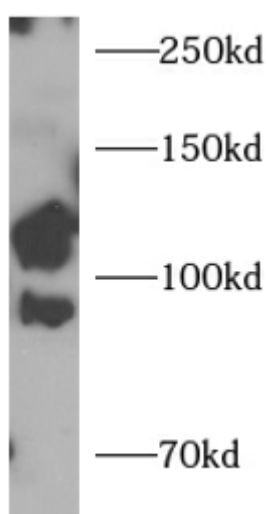
Reactivity:	Human, Mouse, Rat
Tested Application:	ELISA, WB, IHC
Recommended dilution:	WB: 1:500-1:2000; IHC: 1:100-1:400
Image:	

This Antibody is for Research Use Only. Not for Diagnostic Procedures.

This is a sample Antibody manual only. Always refer to the hard copy manual included in the Antibody for your experiment.



Immunohistochemical of paraffin-embedded human small intestine using CAF50202(LGR5 antibody) at dilution of 1:200



mouse brain tissue were subjected to SDS PAGE followed by western blot with CAF50202(LGR5 antibody) at dilution of 1:1000

SAMPLE

This Antibody is for Research Use Only. Not for Diagnostic Procedures.

This is a sample Antibody manual only. Always refer to the hard copy manual included in the Antibody for your experiment.