

anti- LMP2 antibody

Product Information

| | |
|---------------|---|
| Catalog No.: | CAF50204 |
| Size: | 100µg |
| Form: | liquid |
| Purification: | Immunogen affinity purified |
| Purity: | ≥95% as determined by SDS-PAGE |
| Host: | Rabbit |
| Clonality: | polyclonal |
| Clone ID: | None |
| IsoType: | IgG |
| Storage: | PBS with 0.02% sodium azide and 50% glycerol pH 7.3, -20°C for 12 months (Avoid repeated freeze / thaw cycles.) |

Background

The proteasome is a multicatalytic proteinase complex with a highly ordered ring-shaped 20S core structure. The core structure is composed of 4 rings of 28 non-identical subunits; 2 rings are composed of 7 alpha subunits and 2 rings are composed of 7 beta subunits. Proteasomes are distributed throughout eukaryotic cells at a high concentration and cleave peptides in an ATP/ubiquitin-dependent process in a non-lysosomal pathway. An essential function of a modified proteasome, the immunoproteasome, is the processing of class I MHC peptides. This gene encodes a member of the proteasome B-type family, also known as the T1B family, that is a 20S core beta subunit. This gene is located in the class II region of the MHC (major histocompatibility complex). Expression of this gene is induced by gamma interferon and this gene product replaces catalytic subunit 1 (proteasome beta 6 subunit) in the immunoproteasome. Proteolytic processing is required to generate a mature subunit.

Immunogen information

| | |
|--------------|--|
| Immunogen: | proteasome(prosome, macropain) subunit, beta type, 9(large multifunctional peptidase 2) |
| Synonyms: | 20S proteasome, beta1i, LMP2, Low molecular mass protein 2, Macropain chain 7, Proteasome chain 7, Proteasome subunit beta 1i, Proteasome subunit beta type 9, PSMB6i, PSMB9, RING12 |
| Observed MW: | 21-23 kDa |
| Uniprot ID : | P28065 |

Application

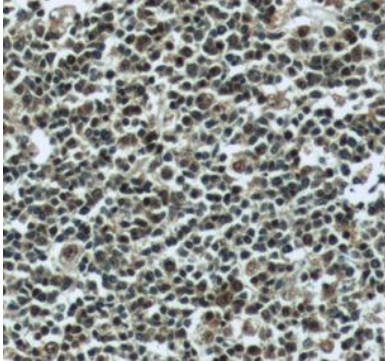
| | |
|---------------------|------------------------|
| Reactivity: | Human, Mouse, Rat |
| Tested Application: | ELISA, WB, IHC, IP, IF |

This Antibody is for Research Use Only. Not for Diagnostic Procedures.

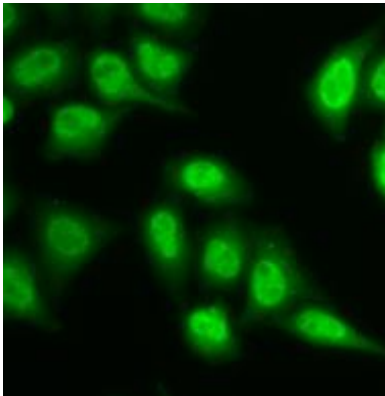
This is a sample Antibody manual only. Always refer to the hard copy manual included in the Antibody for your experiment.

Recommended dilution: WB: 1:500-1:1000; IP: 1:200-1:1000; IHC: 1:20-1:200; IF: 1:50-1:500

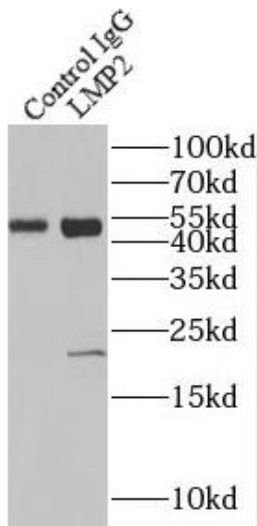
Image:



Immunohistochemistry of paraffin-embedded human tonsillitis using CAF50204 (PSMB9 antibody) at dilution of 1:50



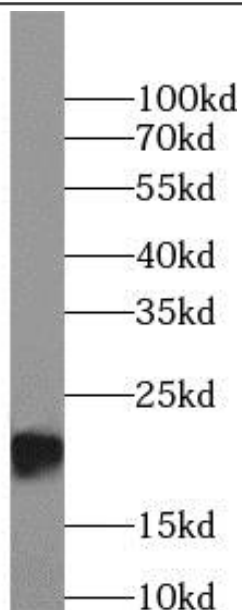
Immunofluorescent analysis of (10% Formaldehyde) fixed MCF-7 cells using CAF50204 (LMP2 antibody) at dilution of 1:50 and Alexa Fluor 488-conjugated Goat Anti-Rabbit IgG(H+L)



IP Result of anti-LMP2 (IP: 4ug; Detection: 1:300) with Raji cells lysate 2800ug.

This Antibody is for Research Use Only. Not for Diagnostic Procedures.

This is a sample Antibody manual only. Always refer to the hard copy manual included in the Antibody for your experiment.



Raji cells were subjected to SDS PAGE followed by western blot with CAF50204(PSMB9 antibody) at dilution of 1:500

ONLY

SAMPLE

This Antibody is for Research Use Only. Not for Diagnostic Procedures.

This is a sample Antibody manual only. Always refer to the hard copy manual included in the Antibody for your experiment.