

anti- LPL antibody

Product Information

Catalog No.:	CAF50205
Size:	100µg
Form:	liquid
Purification:	Immunogen affinity purified
Purity:	≥95% as determined by SDS-PAGE
Host:	Rabbit
Clonality:	polyclonal
Clone ID:	None
IsoType:	IgG
Storage:	PBS with 0.02% sodium azide and 50% glycerol pH 7.3, -20°C for 12 months (Avoid repeated freeze / thaw cycles.)

Background

The primary function of this lipase is the hydrolysis of triglycerides of circulating chylomicrons and very low density lipoproteins(VLDL). Binding to heparin sulfate proteoglycans at the cell surface is vital to the function. The apolipoprotein, APOC2, acts as a coactivator of LPL activity in the presence of lipids on the luminal surface of vascular endothelium(By similarity).

Immunogen information

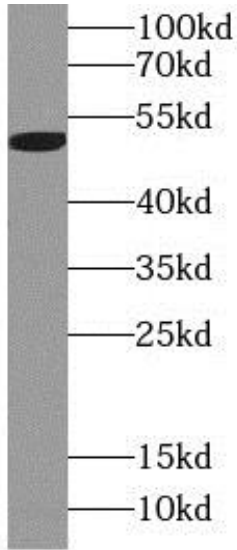
Immunogen:	lipoprotein lipase
Synonyms:	LIPD
Observed MW:	53 kDa
Uniprot ID :	P06858

Application

Reactivity:	Human
Tested Application:	ELISA, WB
Recommended dilution:WB:	1:500 - 1:2000
Image:	

This Antibody is for Research Use Only. Not for Diagnostic Procedures.

This is a sample Antibody manual only. Always refer to the hard copy manual included in the Antibody for your experiment.



HepG2 cells were subjected to SDS PAGE followed by western blot with CAF50205(LPL antibody) at dilution of 1:1000

ONLY

SAMPLE

This Antibody is for Research Use Only. Not for Diagnostic Procedures.

This is a sample Antibody manual only. Always refer to the hard copy manual included in the Antibody for your experiment.