

## anti- MAS1L-Specific antibody

### Product Information

Catalog No.:	CAF50215
Size:	100µg
Form:	liquid
Purification:	Immunogen affinity purified
Purity:	≥95% as determined by SDS-PAGE
Host:	Rabbit
Clonality:	polyclonal
Clone ID:	None
IsoType:	IgG
Storage:	PBS with 0.02% sodium azide and 50% glycerol pH 7.3, -20°C for 12 months (Avoid repeated freeze / thaw cycles.)

### Background

None

### Immunogen information

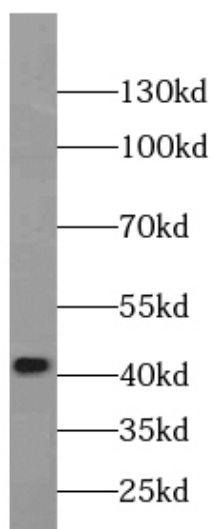
Immunogen:	MAS1 oncogene-like
Synonyms:	None
Observed MW:	42kd
Uniprot ID :	P35410

### Application

Reactivity:	Human
Tested Application:	ELISA, WB, IF
Recommended dilution:	WB: 1:1000-1:4000; IF: 1:10-1:100
Image:	

**This Antibody is for Research Use Only. Not for Diagnostic Procedures.**

This is a sample Antibody manual only. Always refer to the hard copy manual included in the Antibody for your experiment.



HEK-293 cells were subjected to SDS PAGE followed by western blot with CAF50215(MAS1L-Specific antibody) at dilution of 1:500

ONLY

SAMPLE

**This Antibody is for Research Use Only. Not for Diagnostic Procedures.**

This is a sample Antibody manual only. Always refer to the hard copy manual included in the Antibody for your experiment.