

## anti- MEK1 antibody

### Product Information

Catalog No.:	CAF50218
Size:	100µg
Form:	liquid
Purification:	Immunogen affinity purified
Purity:	≥95% as determined by SDS-PAGE
Host:	Rabbit
Clonality:	polyclonal
Clone ID:	None
IsoType:	IgG
Storage:	PBS with 0.02% sodium azide and 50% glycerol pH 7.3, -20°C for 12 months (Avoid repeated freeze / thaw cycles.)

### Background

MEK1 is also named as MAP2K1 (mitogen-activated protein kinase kinase 1), MAPKK1, PRKMK1, MKK1 and belongs to the MAP kinase kinase subfamily. It is a dual-specificity kinase that mediate ERK1 and ERK2 activation during adhesion and growth factor signaling (PMID:19219045). It also plays an essential role in extra-embryonic ectoderm during placentogenesis. MEK1 has 2 isoforms produced by alternative splicing with the molecular weight of 43 kDa and 41 kDa. It can be phosphorylated.

### Immunogen information

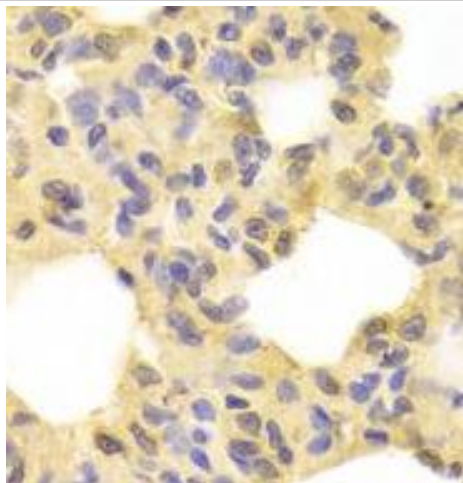
Immunogen:	mitogen-activated protein kinase kinase 1
Synonyms:	ERK activator kinase 1, MAP kinase kinase 1, MAP2K1, MAPK/ERK kinase 1, MAPKK 1, MAPKK1, MEK 1, MEK1, MKK1, PRKMK1
Observed MW:	40 kDa
Uniprot ID :	Q02750

### Application

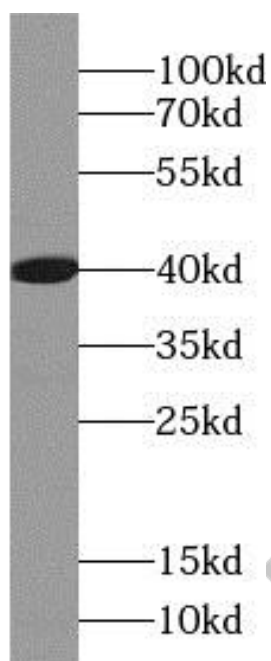
Reactivity:	Human, Mouse, Rat
Tested Application:	ELISA, WB, IHC, IF
Recommended dilution:	WB: 1:500-1:2000; IHC: 1:50-1:200
Image:	

**This Antibody is for Research Use Only. Not for Diagnostic Procedures.**

This is a sample Antibody manual only. Always refer to the hard copy manual included in the Antibody for your experiment.



Immunohistochemistry of paraffin-embedded rat lung using CAF50218(MEK1 antibody) at dilution of 1:100



mouse brain were subjected to SDS PAGE followed by western blot with CAF50218(MEK1 antibody) at dilution of 1:1000

**This Antibody is for Research Use Only. Not for Diagnostic Procedures.**

This is a sample Antibody manual only. Always refer to the hard copy manual included in the Antibody for your experiment.