

## anti- MMP20 antibody

### Product Information

Catalog No.:	CAF50224
Size:	100µg
Form:	liquid
Purification:	Immunogen affinity purified
Purity:	≥95% as determined by SDS-PAGE
Host:	Rabbit
Clonality:	polyclonal
Clone ID:	None
IsoType:	IgG
Storage:	PBS with 0.02% sodium azide and 50% glycerol pH 7.3, -20°C for 12 months (Avoid repeated freeze / thaw cycles.)

### Background

Degrades amelogenin, the major protein component of the enamel matrix and two of the macromolecules characterizing the cartilage extracellular matrix: aggrecan and the cartilage oligomeric matrix protein(COMP). May play a central role in tooth enamel formation.

### Immunogen information

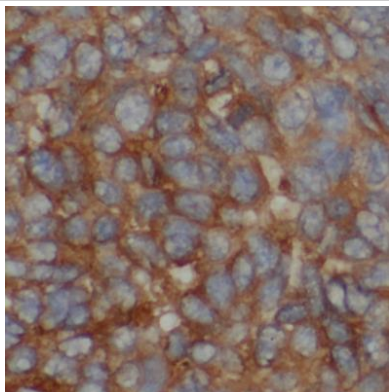
Immunogen:	matrix metalloproteinase 20
Synonyms:	Enamel metalloproteinase, Enamelysin, matrix metalloproteinase 20, Matrix metalloproteinase 20, MMP 20, MMP20
Observed MW:	54 kDa
Uniprot ID :	O60882

### Application

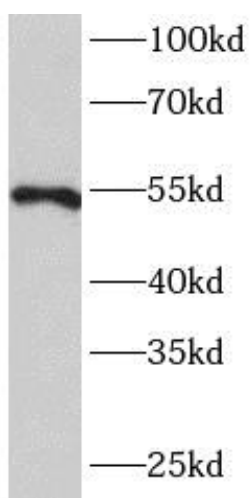
Reactivity:	Human, Mouse, Rat
Tested Application:	ELISA, WB, IHC, IF
Recommended dilution:	WB: 1:500-1:2000; IHC: 1:20-1:200; IF: 1:10-1:100
Image:	

**This Antibody is for Research Use Only. Not for Diagnostic Procedures.**

This is a sample Antibody manual only. Always refer to the hard copy manual included in the Antibody for your experiment.



Immunohistochemistry of paraffin-embedded human liver cancer using CAF50224(MMP20 antibody) at dilution of 1:50



mouse brain tissue were subjected to SDS PAGE followed by western blot with CAF50224(MMP20 antibody) at dilution of 1:1000

SAMPLE

ONLY

**This Antibody is for Research Use Only. Not for Diagnostic Procedures.**

This is a sample Antibody manual only. Always refer to the hard copy manual included in the Antibody for your experiment.