

## anti- MOSC2 antibody

### Product Information

Catalog No.:	CAF50226
Size:	100µg
Form:	liquid
Purification:	Immunogen affinity purified
Purity:	≥95% as determined by SDS-PAGE
Host:	Rabbit
Clonality:	polyclonal
Clone ID:	None
IsoType:	IgG
Storage:	PBS with 0.02% sodium azide and 50% glycerol pH 7.3, -20°C for 12 months (Avoid repeated freeze / thaw cycles.)

### Immunogen information

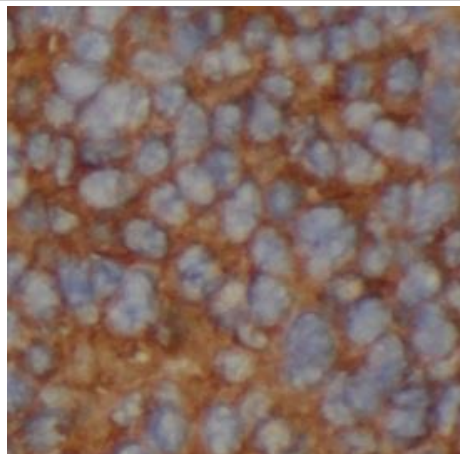
Immunogen:	MOCO sulphurase C-terminal domain containing 2
Synonyms:	MOSC2, RP11 270A6.1
Observed MW:	35 kDa
Uniprot ID :	Q969Z3

### Application

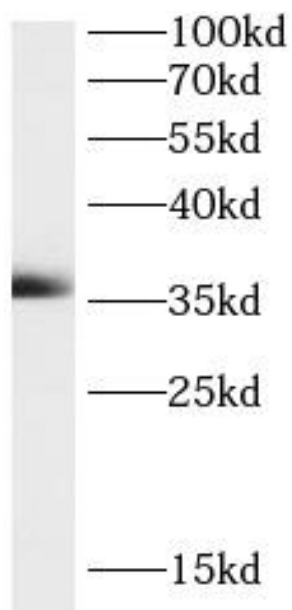
Reactivity:	Human, Mouse
Tested Application:	ELISA, WB, IHC
Recommended dilution:	WB: 1:500-1:2000; IHC: 1:50-1:400
Image:	

**This Antibody is for Research Use Only. Not for Diagnostic Procedures.**

This is a sample Antibody manual only. Always refer to the hard copy manual included in the Antibody for your experiment.



Immunohistochemistry of paraffin-embedded human liver cancer tissue slide using CAF50226( MOSC2 Antibody) at dilution of 1:200



mouse liver tissue were subjected to SDS PAGE followed by western blot with CAF50226( MOSC2 Antibody) at dilution of 1:1000

SAMPLE

**This Antibody is for Research Use Only. Not for Diagnostic Procedures.**

This is a sample Antibody manual only. Always refer to the hard copy manual included in the Antibody for your experiment.