

anti- MYL2 antibody

Product Information

Catalog No.:	CAF50230
Size:	100µg
Form:	liquid
Purification:	Immunogen affinity purified
Purity:	≥95% as determined by SDS-PAGE
Host:	Rabbit
Clonality:	polyclonal
Clone ID:	None
IsoType:	IgG
Storage:	PBS with 0.02% sodium azide and 50% glycerol pH 7.3, -20°C for 12 months (Avoid repeated freeze / thaw cycles.)

Background

Contractile protein that plays a role in heart development and function(By similarity). Following phosphorylation, plays a role in cross-bridge cycling kinetics and cardiac muscle contraction by increasing myosin lever arm stiffness and promoting myosin head diffusion; as a consequence of the increase in maximum contraction force and calcium sensitivity of contraction force. These events altogether slow down myosin kinetics and prolong duty cycle resulting in accumulated myosins being cooperatively recruited to actin binding sites to sustain thin filament activation as a means to fine-tune myofilament calcium sensitivity to force(By similarity). During cardiogenesis plays an early role in cardiac contractility by promoting cardiac myofibril assembly(By similarity).

Immunogen information

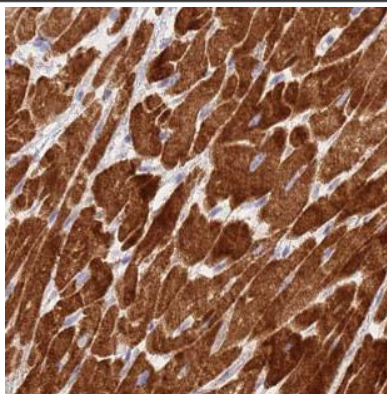
Immunogen:	myosin, light chain 2, regulatory, cardiac, slow
Synonyms:	MLC2
Observed MW:	18-20 kDa
Uniprot ID :	P10916

Application

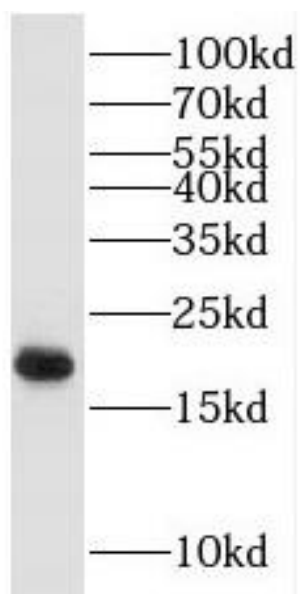
Reactivity:	Human, Mouse, Rat
Tested Application:	ELISA, IHC, WB
Recommended dilution:	WB: 1:500-1:2000; IHC: 1:20-1:200
Image:	

This Antibody is for Research Use Only. Not for Diagnostic Procedures.

This is a sample Antibody manual only. Always refer to the hard copy manual included in the Antibody for your experiment.



Immunohistochemistry of paraffin-embedded human heart tissue slide using CAF50230(MYL2 Antibody) at dilution of 1:50



rat heart tissue were subjected to SDS PAGE followed by western blot with CAF50230(MYL2 Antibody) at dilution of 1:5000

This Antibody is for Research Use Only. Not for Diagnostic Procedures.

This is a sample Antibody manual only. Always refer to the hard copy manual included in the Antibody for your experiment.