

anti- NR1D1 antibody

Product Information

Catalog No.:	CAF50238
Size:	100µg
Form:	liquid
Purification:	Immunogen affinity purified
Purity:	≥95% as determined by SDS-PAGE
Host:	Rabbit
Clonality:	polyclonal
Clone ID:	None
IsoType:	IgG
Storage:	PBS with 0.02% sodium azide and 50% glycerol pH 7.3, -20°C for 12 months (Avoid repeated freeze / thaw cycles.)

Background

NR1D1, also named as EAR1, THRAL, ear-1 and hRev, contains one nuclear receptor DNA-binding domain and belongs to the nuclear hormone receptor family. NR1 subfamily. This protein functions as a constitutive transcriptional repressor. It is a possible receptor for triiodothyronine.

Immunogen information

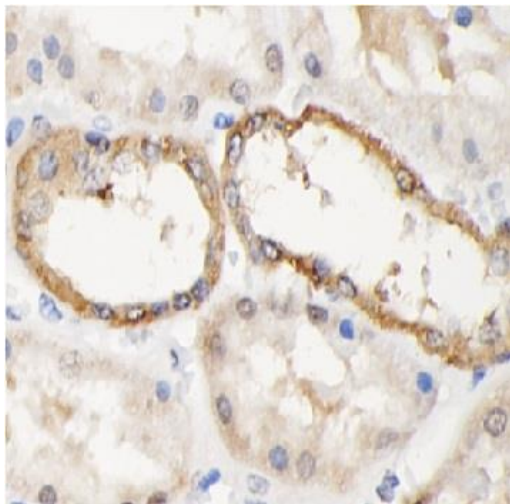
Immunogen:	nuclear receptor subfamily 1, group D, member 1
Synonyms:	EAR1, hRev, NR1D1, Rev erbA alpha, Reverb alpha, THRA1, THRAL, V erbA related protein 1
Observed MW:	55-68 kDa
Uniprot ID :	P20393

Application

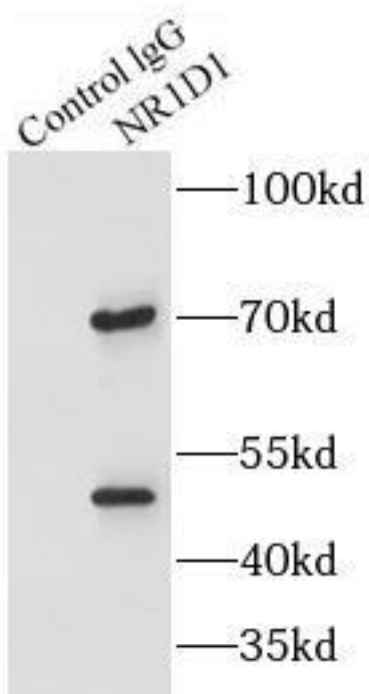
Reactivity:	Human, Mouse, Rat
Tested Application:	ELISA, WB, IHC, IP
Recommended dilution:	WB: 1:500-1:2000; IHC: 1:200-1:1000; IP: 1:200-1:1000
Image:	

This Antibody is for Research Use Only. Not for Diagnostic Procedures.

This is a sample Antibody manual only. Always refer to the hard copy manual included in the Antibody for your experiment.



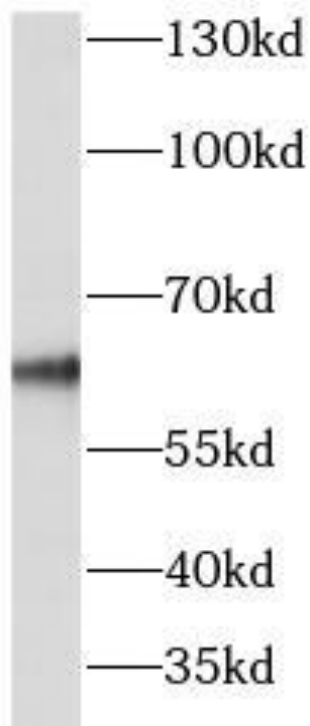
Immunohistochemistry of paraffin-embedded human kidney tissue using CAF50238(NR1D1 antibody) at dilution of 1:100



IP Result of anti-NR1D1 (IP: CAF50238, 4ug; Detection: CAF50238 1:500) with A549 cells lysate 1000ug.

This Antibody is for Research Use Only. Not for Diagnostic Procedures.

This is a sample Antibody manual only. Always refer to the hard copy manual included in the Antibody for your experiment.



HeLa cells were subjected to SDS PAGE followed by western blot with CAF50238(NR1D1 antibody) at dilution of 1:1000

ONLY

SAMPLE

This Antibody is for Research Use Only. Not for Diagnostic Procedures.

This is a sample Antibody manual only. Always refer to the hard copy manual included in the Antibody for your experiment.