

anti- Osteopontin antibody

Product Information

Catalog No.:	CAF50243
Size:	100µg
Form:	liquid
Purification:	Immunogen affinity purified
Purity:	≥95% as determined by SDS-PAGE
Host:	Rabbit
Clonality:	polyclonal
Clone ID:	None
IsoType:	IgG
Storage:	PBS with 0.02% sodium azide and 50% glycerol pH 7.3, -20°C for 12 months (Avoid repeated freeze / thaw cycles.)

Background

Osteopontin(OPN), also known as SPP1, is a secreted glycoprophosphoprotein that belongs to the small integrin-binding ligand N-linked glycoprotein(SIBLING) family. Originally isolated from bone, OPN has been found in kidney, vascular tissues, biological fluids, and various tumor tissues(PMID: 15138464; 16406521). OPN can interact with CD44 and integrins and regulate diverse biological processes. It has a multifaceted role in bone development and remodeling, and is also involved in the inflammatory and immune response, oncogenesis and cancer progression.

Immunogen information

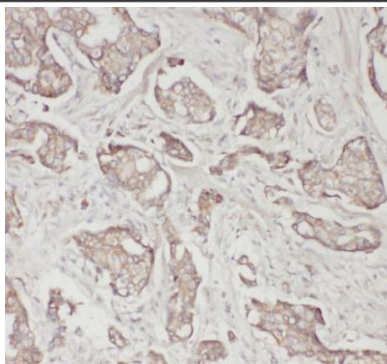
Immunogen:	secreted phosphoprotein 1
Synonyms:	BNSP, Bone sialoprotein 1, BSPI, ETA 1, Nephropontin, OPN, Osteopontin, secreted phosphoprotein 1, SPP 1, SPP1, Urinary stone protein, Uropontin
Observed MW:	66 kDa
Uniprot ID :	P10451

Application

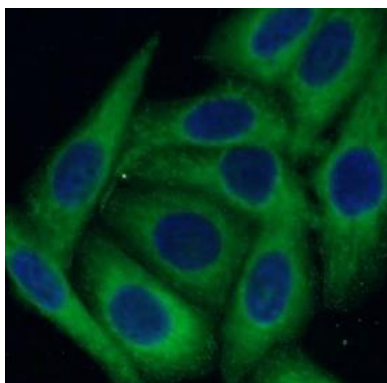
Reactivity:	Human, Mouse, Rat
Tested Application:	ELISA, IHC, WB, IF
Recommended dilution:	WB: 1:500-1:2000; IHC: 1:50-1:200; IF: 1:20-1:200
Image:	

This Antibody is for Research Use Only. Not for Diagnostic Procedures.

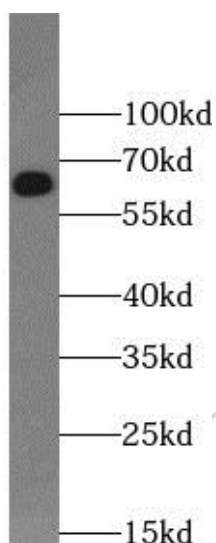
This is a sample Antibody manual only. Always refer to the hard copy manual included in the Antibody for your experiment.



Immunohistochemistry of paraffin-embedded human stomach cancer using CAF50243(OPN antibody) at dilution of 1:50



Immunofluorescent analysis of HepG2 cells using CAF50243 (Osteopontin antibody) at dilution of 1:50 and Alexa Fluor 488-conjugated Goat Anti-Rabbit IgG(H+L)



mouse kidney tissue were subjected to SDS PAGE followed by western blot with CAF50243(OPN Antibody) at dilution of 1:1000

This Antibody is for Research Use Only. Not for Diagnostic Procedures.

This is a sample Antibody manual only. Always refer to the hard copy manual included in the Antibody for your experiment.