

anti- PAI-1 antibody

Product Information

Catalog No.:	CAF50247
Size:	100µg
Form:	liquid
Purification:	Immunogen affinity purified
Purity:	≥95% as determined by SDS-PAGE
Host:	Rabbit
Clonality:	polyclonal
Clone ID:	None
IsoType:	IgG
Storage:	PBS with 0.02% sodium azide and 50% glycerol pH 7.3, -20°C for 12 months (Avoid repeated freeze / thaw cycles.)

Immunogen information

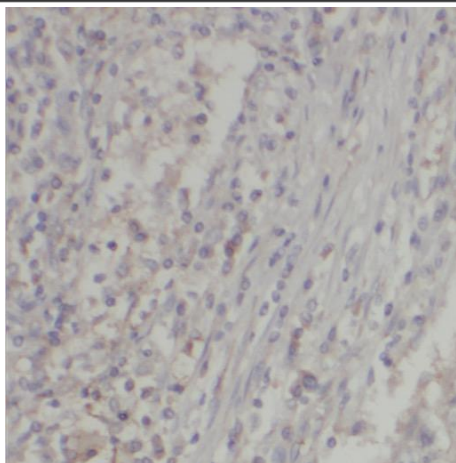
Immunogen:	serpin peptidase inhibitor, clade E(nexin, plasminogen activator inhibitor type 1), member 1
Synonyms:	PAI, PAI 1, PAI1, PAI-1, PLANH1, Serpin E1, SERPINE1, PAI-1
Observed MW:	45 kDa
Uniprot ID :	P05121

Application

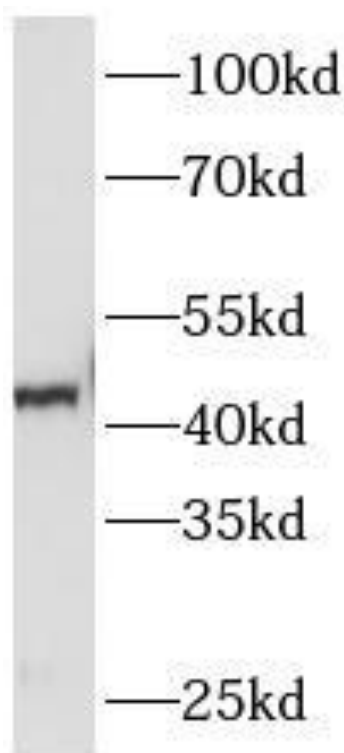
Reactivity:	Human, Mouse, Rat
Tested Application:	ELISA, IHC, WB
Recommended dilution:	WB: 1:500 - 1:2000; IHC: 1:50 - 1:500
Image:	

This Antibody is for Research Use Only. Not for Diagnostic Procedures.

This is a sample Antibody manual only. Always refer to the hard copy manual included in the Antibody for your experiment.



Immunohistochemistry of paraffin-embedded human lung cancer tissue slide using CAF50247(SERPINE1 Antibody) at dilution of 1:200 heat mediated antigen retrieved with Tris-EDTA buffer(pH9).



PC-12 cells were subjected to SDS PAGE followed by western blot with CAF50247(SERPINE1 Antibody) at dilution of 1:1000

This Antibody is for Research Use Only. Not for Diagnostic Procedures.

This is a sample Antibody manual only. Always refer to the hard copy manual included in the Antibody for your experiment.