

## anti- PALB2 antibody

### Product Information

Catalog No.:	CAF50248
Size:	100µg
Form:	liquid
Purification:	Immunogen affinity purified
Purity:	≥95% as determined by SDS-PAGE
Host:	Rabbit
Clonality:	polyclonal
Clone ID:	None
IsoType:	IgG
Storage:	PBS with 0.02% sodium azide and 50% glycerol pH 7.3, -20°C for 12 months (Avoid repeated freeze / thaw cycles.)

### Immunogen information

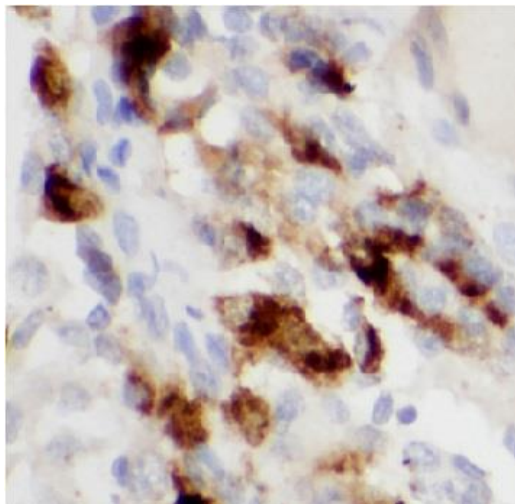
Immunogen:	partner and localizer of BRCA2
Synonyms:	DKFZp667I166, DKFZp686E1054, FANCN, FLJ21816, PALB2, partner and localizer of BRCA2
Observed MW:	131kd
Uniprot ID :	Q86YC2

### Application

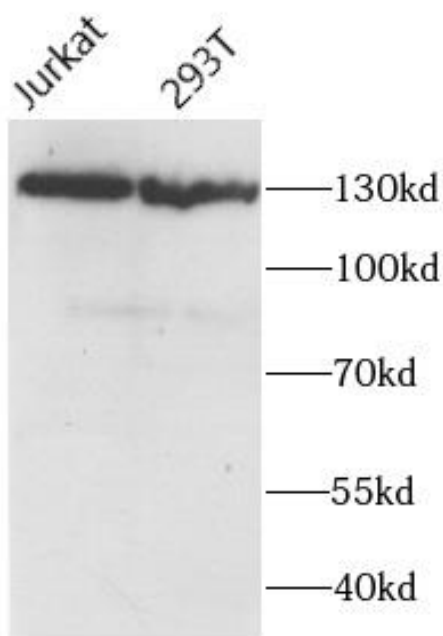
Reactivity:	Human
Tested Application:	ELISA, WB, IHC
Recommended dilution:	WB: 1:500-1:2000; IHC: 1:20-1:200
Image:	

**This Antibody is for Research Use Only. Not for Diagnostic Procedures.**

This is a sample Antibody manual only. Always refer to the hard copy manual included in the Antibody for your experiment.



Immunohistochemistry of paraffin-embedded human breast cancer tissue slide using CAF50248(PALB2 Antibody) at dilution of 1:100



various lysates were subjected to SDS PAGE followed by western blot with CAF50248(PALB2 antibody) at dilution of 1:500

**This Antibody is for Research Use Only. Not for Diagnostic Procedures.**

This is a sample Antibody manual only. Always refer to the hard copy manual included in the Antibody for your experiment.