

## anti- PFKP antibody

### Product Information

Catalog No.:	CAF50258
Size:	100µg
Form:	liquid
Purification:	Immunogen affinity purified
Purity:	≥95% as determined by SDS-PAGE
Host:	Rabbit
Clonality:	polyclonal
Clone ID:	None
IsoType:	IgG
Storage:	PBS with 0.02% sodium azide and 50% glycerol pH 7.3, -20°C for 12 months (Avoid repeated freeze / thaw cycles.)

### Background

Catalyzes the phosphorylation of D-fructose 6-phosphate to fructose 1,6-bisphosphate by ATP, the first committing step of glycolysis.

### Immunogen information

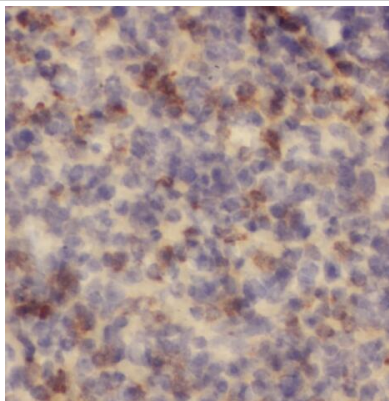
Immunogen:	phosphofructokinase, platelet
Synonyms:	6 phosphofructokinase type C, FLJ40226, PFK C, PFKF, PFKP, Phosphofructokinase 1, phosphofructokinase, platelet, PhosphohexokinaseF
Observed MW:	86 kDa
Uniprot ID :	Q01813

### Application

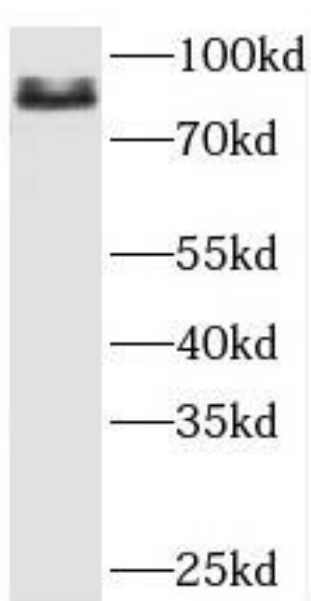
Reactivity:	Human, Mouse, Rat
Tested Application:	ELISA, WB, IHC, IF
Recommended dilution:	WB: 1:500-1:5000; IP: 1:500-1:5000; IHC: 1:20-1:200; IF: 1:10-1:100
Image:	

**This Antibody is for Research Use Only. Not for Diagnostic Procedures.**

This is a sample Antibody manual only. Always refer to the hard copy manual included in the Antibody for your experiment.



Immunohistochemistry of paraffin-embedded human spleen tissue slide using CAF50258(PFKP Antibody) at dilution of 1:50



mouse heart tissue were subjected to SDS PAGE followed by western blot with CAF50258(PFKP antibody) at dilution of 1:1500

**This Antibody is for Research Use Only. Not for Diagnostic Procedures.**

This is a sample Antibody manual only. Always refer to the hard copy manual included in the Antibody for your experiment.