

anti- PHC2 antibody

Product Information

Catalog No.:	CAF50261
Size:	100µg
Form:	liquid
Purification:	Immunogen affinity purified
Purity:	≥95% as determined by SDS-PAGE
Host:	Rabbit
Clonality:	polyclonal
Clone ID:	None
IsoType:	IgG
Storage:	PBS with 0.02% sodium azide and 50% glycerol pH 7.3, -20°C for 12 months (Avoid repeated freeze / thaw cycles.)

Background

Component of a Polycomb group(PcG) multiprotein PRC1-like complex, a complex class required to maintain the transcriptionally repressive state of many genes, including Hox genes, throughout development. PcG PRC1 complex acts via chromatin remodeling and modification of histones; it mediates monoubiquitination of histone H2A 'Lys-119', rendering chromatin heritably changed in its expressibility.

Immunogen information

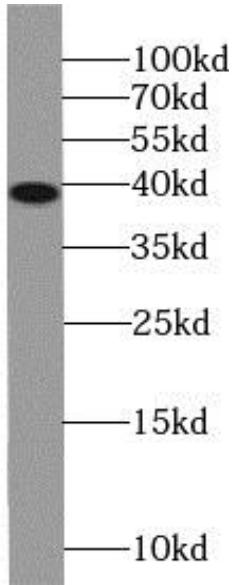
Immunogen:	polyhomeotic homolog 2(Drosophila)
Synonyms:	EDR2, HPH2, PH2, PHC2, Polyhomeotic like protein 2
Observed MW:	40kd
Uniprot ID :	Q8IXK0

Application

Reactivity:	Human, Mouse, Rat
Tested Application:	ELISA, WB,IF
Recommended dilution:	WB: 1:200-1:2000; IF: 1:50-1:500
Image:	

This Antibody is for Research Use Only. Not for Diagnostic Procedures.

This is a sample Antibody manual only. Always refer to the hard copy manual included in the Antibody for your experiment.



A375 cells were subjected to SDS PAGE followed by western blot with CAF50261(PHC2 Antibody) at dilution of 1:600

ONLY

SAMPLE

This Antibody is for Research Use Only. Not for Diagnostic Procedures.

This is a sample Antibody manual only. Always refer to the hard copy manual included in the Antibody for your experiment.