

## anti- PHOX2B antibody

### Product Information

Catalog No.:	CAF50263
Size:	100µg
Form:	liquid
Purification:	Immunogen affinity purified
Purity:	≥95% as determined by SDS-PAGE
Host:	Rabbit
Clonality:	polyclonal
Clone ID:	None
IsoType:	IgG
Storage:	PBS with 0.02% sodium azide and 50% glycerol pH 7.3, -20°C for 12 months (Avoid repeated freeze / thaw cycles.)

### Background

Involved in the development of several major noradrenergic neuron populations, including the locus coeruleus. Transcription factor which could determine a neurotransmitter phenotype in vertebrates. Enhances second-messenger-mediated activation of the dopamine beta-hydroxylase and c-fos promoters, and of several enhancers including cAMP-response element and serum-response element.

### Immunogen information

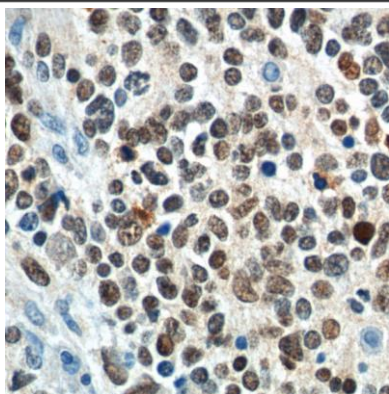
Immunogen:	paired-like homeobox 2b
Synonyms:	PMX2B
Observed MW:	31 kDa
Uniprot ID :	Q99453

### Application

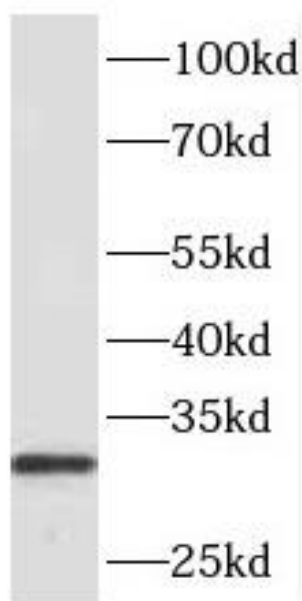
Reactivity:	Human, Mouse
Tested Application:	ELISA, WB, IF, IHC
Recommended dilution:	WB: 1:500-1:2000; IHC: 1:20-1:200; IF: 1:20-1:200
Image:	

**This Antibody is for Research Use Only. Not for Diagnostic Procedures.**

This is a sample Antibody manual only. Always refer to the hard copy manual included in the Antibody for your experiment.



Immunohistochemistry of paraffin-embedded neuroblastoma tissue slide using CAF50263 (PHOX2B Antibody) at dilution of 1:200



Neuro-2a cells were subjected to SDS PAGE followed by western blot with CAF50263 (PHOX2B Antibody) at dilution of 1:1000