

anti- PIGF Rabbit Polyclonal antibody

Product Information

Catalog No.:	CAF50265
Size:	100 μ g
Form:	liquid
Purification:	Immunogen affinity purified
Purity:	\geq 95% as determined by SDS-PAGE
Host:	Rabbit
IsoType:	IgG
Storage:	PBS with 0.02% sodium azide and 50% glycerol pH 7.3 , -20°C for 12 months (Avoid repeated freeze / thaw cycles.)

Background

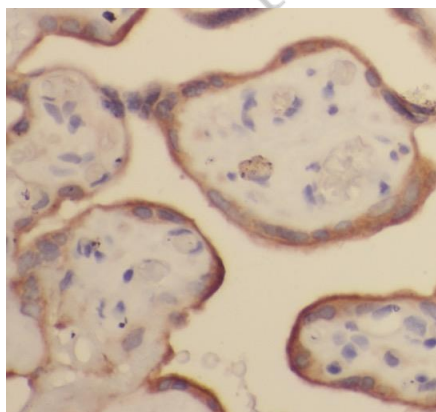
Involved in GPI-anchor biosynthesis through the transfer of ethanolamine phosphate to the third mannose of GPI.

Immunogen information

Immunogen:	placental growth factor
Synonyms:	D12S1900, PGF, PGFL, PIGF, Placenta growth factor, placental growth factor, PLGF, PIGF 2, SHGC 10760
Calculated MW:	50 kDa
UniprotID :	P49763

Application

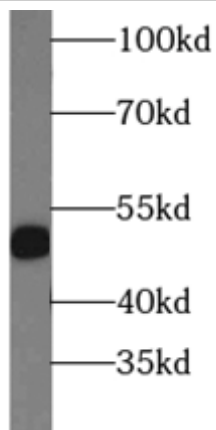
Specificity:	Human, Mouse, Rat
Tested Application:	ELISA, WB, IHC
Recommended dilution:	WB: 1:500-1:1000; IHC: 1:50-1:500
Image:	



Immunohistochemistry of paraffin-embedded human placenta tissue slide using CAF50265(PGF Antibody) at dilution of 1:50

This Antibody is for Research Use Only. Not for Diagnostic Procedures.

This is a sample Antibody manual only. Always refer to the hard copy manual included in the Antibody for your experiment.



Human placenta tissue were subjected to SDS PAGE followed by western blot with CAF50265(PGF antibody) at dilution of 1:1000

ONLY

SAMPLE

This Antibody is for Research Use Only. Not for Diagnostic Procedures.

This is a sample Antibody manual only. Always refer to the hard copy manual included in the Antibody for your experiment.