

## anti- PLAP antibody

### Product Information

Catalog No.:	CAF50269
Size:	100µg
Form:	liquid
Purification:	Immunogen affinity purified
Purity:	≥95% as determined by SDS-PAGE
Host:	Rabbit
Clonality:	polyclonal
Clone ID:	None
IsoType:	IgG
Storage:	PBS with 0.02% sodium azide and 50% glycerol pH 7.3, -20°C for 12 months (Avoid repeated freeze / thaw cycles.)

### Background

Placental alkaline phosphatase(PLAP) is a glycosyl phosphatidylinositol(GPI)-anchored sialoglycoprotein, which shows greater resistance to heat inactivation than other alkaline phosphatase. Presented at high levels in placental trophoblasts, PLAP is recognized as an important marker of differentiation in human malignancies.

### Immunogen information

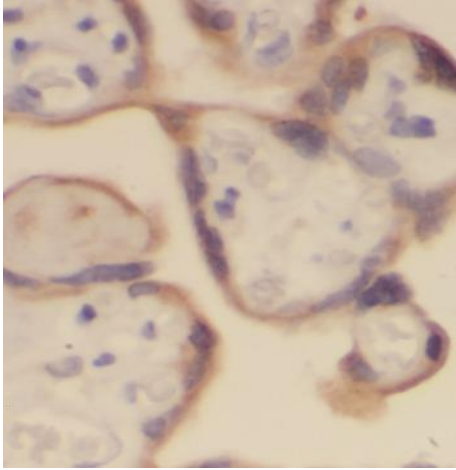
Immunogen:	alkaline phosphatase, placental(Regan isozyme)
Synonyms:	ALP, ALPP, FLJ61142, PALP, Placental alkaline phosphatase, PLAP, PLAP 1
Observed MW:	58kd
Uniprot ID :	P05187

### Application

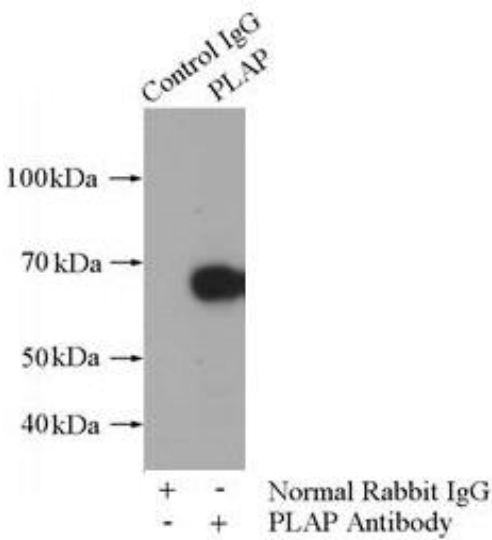
Reactivity:	Human, Mouse
Tested Application:	ELISA, IHC, WB, IP
Recommended dilution:	WB: 1:500-1:1000; IP: 1:500-1:1000; IHC: 1:20-1:200
Image:	

**This Antibody is for Research Use Only. Not for Diagnostic Procedures.**

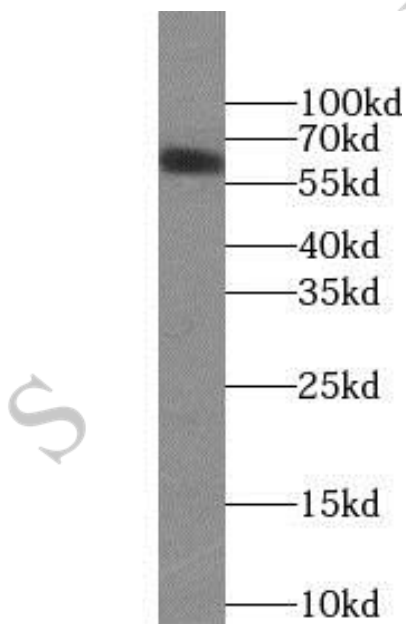
This is a sample Antibody manual only. Always refer to the hard copy manual included in the Antibody for your experiment.



Immunohistochemistry of paraffin-embedded human placenta using CAF50269(PLAP antibody) at dilution of 1:100



IP Result of anti-PLAP (IP: CAF50269, 4ug; Detection: CAF50269 1:800) with HepG2 cells lysate 1800ug.



HepG2 cells were subjected to SDS PAGE followed by western blot with CAF50269(PLAP Antibody) at dilution of 1:1000

**This Antibody is for Research Use Only. Not for Diagnostic Procedures.**

This is a sample Antibody manual only. Always refer to the hard copy manual included in the Antibody for your experiment.