

anti- PMS2 antibody

Product Information

Catalog No.:	CAF50270
Size:	100µg
Form:	liquid
Purification:	Immunogen affinity purified
Purity:	≥95% as determined by SDS-PAGE
Host:	Rabbit
Clonality:	polyclonal
Clone ID:	None
IsoType:	IgG
Storage:	PBS with 0.02% sodium azide and 50% glycerol pH 7.3, -20°C for 12 months (Avoid repeated freeze / thaw cycles.)

Background

Component of the post-replicative DNA mismatch repair system(MMR). Heterodimerizes with MLH1 to form MutL alpha. DNA repair is initiated by MutS alpha(MSH2-MSH6) or MutS beta(MSH2-MSH6) binding to a dsDNA mismatch, then MutL alpha is recruited to the heteroduplex. Assembly of the MutL-MutS-heteroduplex ternary complex in presence of RFC and PCNA is sufficient to activate endonuclease activity of PMS2. It introduces single-strand breaks near the mismatch and thus generates new entry points for the exonuclease EXO1 to degrade the strand containing the mismatch. DNA methylation would prevent cleavage and therefore assure that only the newly mutated DNA strand is going to be corrected. MutL alpha(MLH1-PMS2) interacts physically with the clamp loader subunits of DNA polymerase III, suggesting that it may play a role to recruit the DNA polymerase III to the site of the MMR. Also implicated in DNA damage signaling, a process which induces cell cycle arrest and can lead to apoptosis in case of major DNA damages.

Immunogen information

Immunogen:	PMS2 postmeiotic segregation increased 2(S. cerevisiae)
Synonyms:	HNPCC4, PMS1 protein homolog 2, PMS2, PMS2CL, PMSL2
Observed MW:	100 kDa
Uniprot ID :	P54278

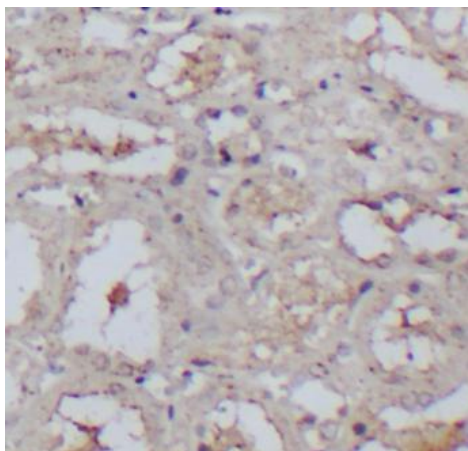
Application

Reactivity:	Human, Mouse, Rat
Tested Application:	ELISA, WB, IHC
Recommended dilution:WB:	1:500-1:2000; IHC: 1:50-1:500

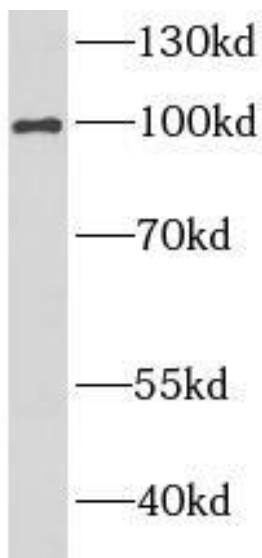
This Antibody is for Research Use Only. Not for Diagnostic Procedures.

This is a sample Antibody manual only. Always refer to the hard copy manual included in the Antibody for your experiment.

Image:



Immunohistochemistry of paraffin-embedded human kidney tissue slide using CAF50270(PMS2 Antibody) at dilution of 1:1000



Rat brain were subjected to SDS PAGE followed by western blot with CAF50270(PMS2 antibody) at dilution of 1:1000

This Antibody is for Research Use Only. Not for Diagnostic Procedures.

This is a sample Antibody manual only. Always refer to the hard copy manual included in the Antibody for your experiment.