

anti- PPP2R2A antibody

Product Information

Catalog No.:	CAF50272
Size:	100µg
Form:	liquid
Purification:	Immunogen affinity purified
Purity:	≥95% as determined by SDS-PAGE
Host:	Rabbit
Clonality:	polyclonal
Clone ID:	None
IsoType:	IgG
Storage:	PBS with 0.02% sodium azide and 50% glycerol pH 7.3, -20°C for 12 months (Avoid repeated freeze / thaw cycles.)

Background

The product of this gene belongs to the phosphatase 2 regulatory subunit B family. Protein phosphatase 2 is one of the four major Ser/Thr phosphatases, and it is implicated in the negative control of cell growth and division. It consists of a common heteromeric core enzyme, which is composed of a catalytic subunit and a constant regulatory subunit, that associates with a variety of regulatory subunits. The B regulatory subunit might modulate substrate selectivity and catalytic activity. This gene encodes an alpha isoform of the regulatory subunit B55 subfamily. Alternatively spliced transcript variants have been described.

Immunogen information

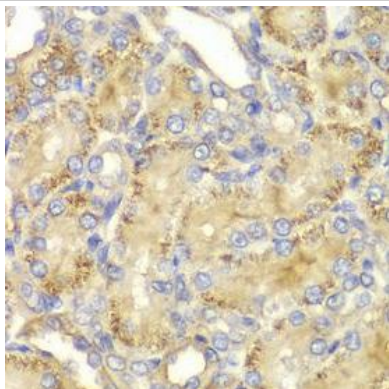
Immunogen:	protein phosphatase 2 (formerly 2A), regulatory subunit B, alpha isoform
Synonyms:	None
Observed MW:	52 kDa
Uniprot ID :	P63151

Application

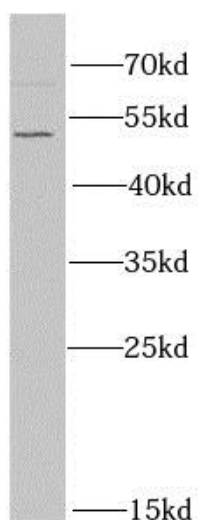
Reactivity:	Human, Mouse, Rat
Tested Application:	ELISA, IHC, WB
Recommended dilution:	WB: 1:500 - 1:2000; IHC: 1:50 - 1:100
Image:	

This Antibody is for Research Use Only. Not for Diagnostic Procedures.

This is a sample Antibody manual only. Always refer to the hard copy manual included in the Antibody for your experiment.



Immunohistochemistry of paraffin-embedded rat kidney using CAF50272(PPP2R2A antibody) at dilution of 1:100



mouse brain tissue were subjected to SDS PAGE followed by western blot with CAF50272(PPP2R2A antibody) at dilution of 1:1000

SAMPLE

ONLY

This Antibody is for Research Use Only. Not for Diagnostic Procedures.

This is a sample Antibody manual only. Always refer to the hard copy manual included in the Antibody for your experiment.