

## anti- PPP3CA antibody

### Product Information

Catalog No.:	CAF50273
Size:	100µg
Form:	liquid
Purification:	Immunogen affinity purified
Purity:	≥95% as determined by SDS-PAGE
Host:	Rabbit
Clonality:	polyclonal
Clone ID:	None
IsoType:	IgG
Storage:	PBS with 0.02% sodium azide and 50% glycerol pH 7.3, -20°C for 12 months (Avoid repeated freeze / thaw cycles.)

### Background

Calcium-dependent, calmodulin-stimulated protein phosphatase. Many of the substrates contain a PxIxIT motif. This subunit may have a role in the calmodulin activation of calcineurin. Dephosphorylates DNM1L, HSPB1 and SSH1.

### Immunogen information

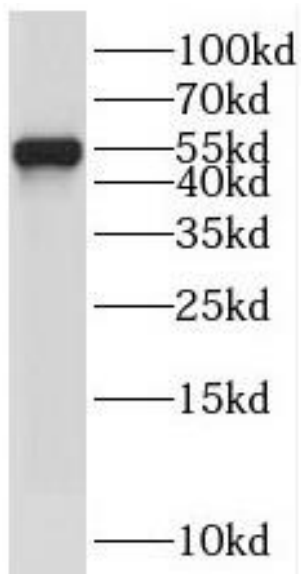
Immunogen:	protein phosphatase 3(formerly 2B), catalytic subunit, alpha isoform
Synonyms:	Calcineurin A alpha, CALN, CALNA, CALNA1, CAM PRP catalytic subunit, CCN1, CNA, CNA1, PPP2B, PPP3CA, PP2BA
Observed MW:	53 kDa
Uniprot ID :	Q08209

### Application

Reactivity:	Human
Tested Application:	ELISA, WB, IHC
Recommended dilution:	WB: 1:200-1:2000; IHC: 1:50-1:500
Image:	

**This Antibody is for Research Use Only. Not for Diagnostic Procedures.**

This is a sample Antibody manual only. Always refer to the hard copy manual included in the Antibody for your experiment.



A549 cells were subjected to SDS PAGE followed by western blot with CAF50273(PPP3CA Antibody) at dilution of 1:1000

ONLY

SAMPLE

**This Antibody is for Research Use Only. Not for Diagnostic Procedures.**

This is a sample Antibody manual only. Always refer to the hard copy manual included in the Antibody for your experiment.