

anti- PYCR2 antibody

Product Information

Catalog No.:	CAF50283
Size:	100µg
Form:	liquid
Purification:	Immunogen affinity purified
Purity:	≥95% as determined by SDS-PAGE
Host:	Rabbit
Clonality:	polyclonal
Clone ID:	None
IsoType:	IgG
Storage:	PBS with 0.02% sodium azide and 50% glycerol pH 7.3, -20°C for 12 months (Avoid repeated freeze / thaw cycles.)

Background

Housekeeping enzyme that catalyzes the last step in proline biosynthesis. In some cell types, such as erythrocytes, its primary function may be the generation of NADP(+). Can utilize both NAD and NADP. Has higher affinity for NADP, but higher catalytic efficiency with NADH(PubMed:2722838, PubMed:6894153). Involved in cellular response to oxidative stress(PubMed:25865492).

Immunogen information

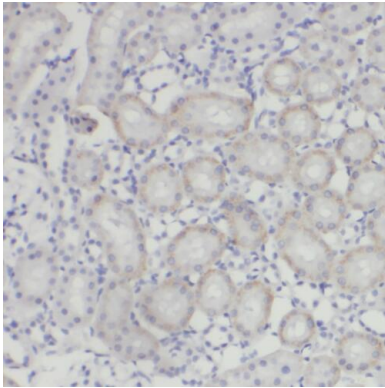
Immunogen:	pyrroline-5-carboxylate reductase family, member 2
Synonyms:	None
Observed MW:	34 kDa
Uniprot ID :	Q96C36

Application

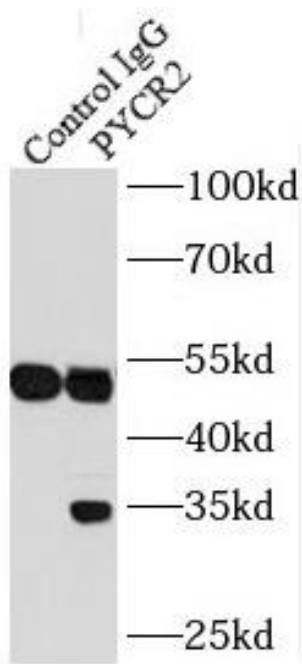
Reactivity:	Human, Mouse, Rat
Tested Application:	ELISA, WB, IHC, IF, IP
Recommended dilution:	WB: 1:500-1:2000; IP: 1:200-1:1000; IHC: 1:20-1:200; IF: 1:20-1:200
Image:	

This Antibody is for Research Use Only. Not for Diagnostic Procedures.

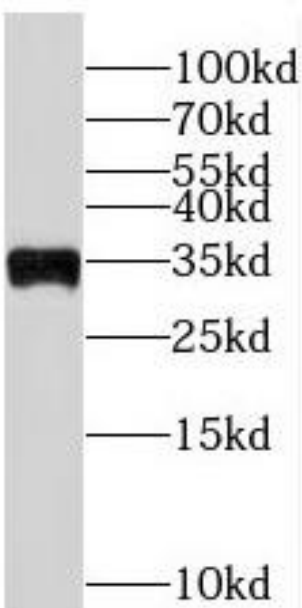
This is a sample Antibody manual only. Always refer to the hard copy manual included in the Antibody for your experiment.



Immunohistochemistry of paraffin-embedded human ovary using CAF50283(PYCR2 antibody) at dilution of 1:50



IP Result of anti-PYCR2 (IP:CAF50283, 4ug; Detection:CAF50283 1:500) with Jurkat cells lysate 2400ug.



Jurkat cells were subjected to SDS PAGE followed by western blot with CAF50283(PYCR2 antibody) at dilution of 1:5000

This Antibody is for Research Use Only. Not for Diagnostic Procedures.

This is a sample Antibody manual only. Always refer to the hard copy manual included in the Antibody for your experiment.

SAMPLE ONLY

This Antibody is for Research Use Only. Not for Diagnostic Procedures.

This is a sample Antibody manual only. Always refer to the hard copy manual included in the Antibody for your experiment.