

anti- Rac1 antibody

Product Information

Catalog No.:	CAF50287
Size:	100µg
Form:	liquid
Purification:	Immunogen affinity purified
Purity:	≥95% as determined by SDS-PAGE
Host:	Rabbit
Clonality:	polyclonal
Clone ID:	None
IsoType:	IgG
Storage:	PBS with 0.02% sodium azide and 50% glycerol pH 7.3, -20°C for 12 months (Avoid repeated freeze / thaw cycles.)

Background

The protein encoded by this gene is a GTPase which belongs to the RAS superfamily of small GTP-binding proteins. Members of this superfamily appear to regulate a diverse array of cellular events, including the control of cell growth, cytoskeletal reorganization, and the activation of protein kinases. Two transcript variants encoding different isoforms have been found for this gene.

Immunogen information

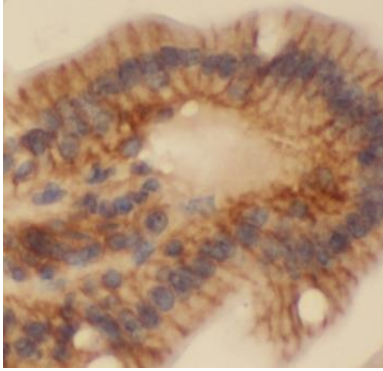
Immunogen:	ras-related C3 botulinum toxin substrate 1 (rho family, small GTP binding protein Rac1)
Synonyms:	MIG5, p21 Rac1, RAC1, RAC1b, Ras like protein TC25, TC 25, TC25
Observed MW:	21 kDa
Uniprot ID :	P63000

Application

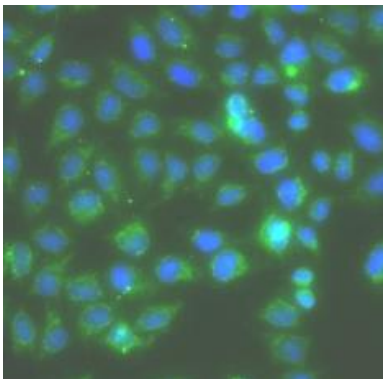
Reactivity:	Human, Mouse, Rat
Tested Application:	ELISA, WB, IHC, IF
Recommended dilution:	WB: 1:500 - 1:2000; IHC: 1:50 - 1:200; IF: 1:50 - 1:100
Image:	

This Antibody is for Research Use Only. Not for Diagnostic Procedures.

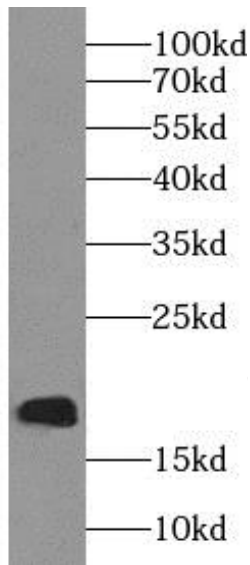
This is a sample Antibody manual only. Always refer to the hard copy manual included in the Antibody for your experiment.



Immunohistochemistry of paraffin-embedded human colon tissue slide using CAF50287(RAC1 Antibody) at dilution of 1:100



Immunofluorescence analysis of A549 cells using CAF50287(RAC1 Antibody). Blue: DAPI for nuclear staining.



human brain tissue were subjected to SDS PAGE followed by western blot with CAF50287(RAC1 antibody) at dilution of 1:1000

This Antibody is for Research Use Only. Not for Diagnostic Procedures.

This is a sample Antibody manual only. Always refer to the hard copy manual included in the Antibody for your experiment.