

## anti- RB1CC1 antibody

### Product Information

Catalog No.:	CAF50290
Size:	100µg
Form:	liquid
Purification:	Immunogen affinity purified
Purity:	≥95% as determined by SDS-PAGE
Host:	Rabbit
Clonality:	polyclonal
Clone ID:	None
IsoType:	IgG
Storage:	PBS with 0.02% sodium azide and 50% glycerol pH 7.3, -20°C for 12 months (Avoid repeated freeze / thaw cycles.)

### Background

Plays a role as a modulator of TGF-beta-signaling by restricting substrate specificity of RNF111. Involved in autophagy. Regulates early events but also late events of autophagosome formation through direct interaction with Atg16L1. Required for the formation of the autophagosome-like double-membrane structure that surrounds the Salmonella-containing vacuole(SCV) during S.typhimurium infection and subsequent xenophagy. Autophagy positively regulates repair of DNA damage induced by ionizing radiation and negatively regulates apoptosis. Plays an indispensable role in fetal hematopoiesis and in the regulation of neuronal homeostasis(By similarity). Implicated in the regulation of RB1 expression. Functions as a DNA-binding transcription factor. Is a potent regulator of the RB1 pathway and a mediator that plays a crucial role in muscular differentiation. Expression is, thus, a prerequisite for myogenic differentiation. Inhibits PTK2/FAK1 and PTK2B/PYK2 activity and activation of downstream signaling pathways.

### Immunogen information

Immunogen:	RB1-inducible coiled-coil 1
Synonyms:	CC1, DRAGOU14, FIP200, KIAA0203, RB1 inducible coiled coil 1, RB1CC1, RBICC
Observed MW:	200 kDa
Uniprot ID :	Q8TDY2

### Application

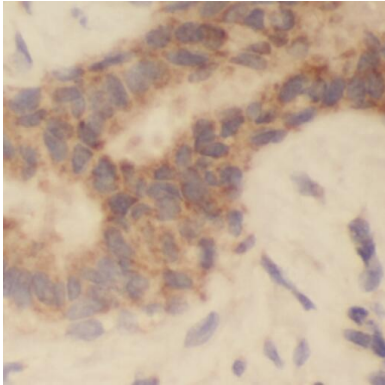
Reactivity:	Human, Mouse, Rat
Tested Application:	ELISA, WB, IHC, IF, IP

**This Antibody is for Research Use Only. Not for Diagnostic Procedures.**

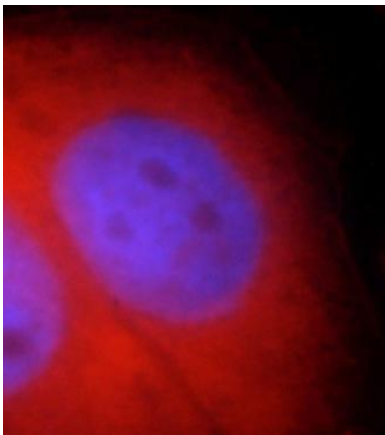
This is a sample Antibody manual only. Always refer to the hard copy manual included in the Antibody for your experiment.

Recommended dilution: WB: 1:1000-1:6000; IP:1:500-1:1000; IHC: 1:20-1:200; IF: 1:10-1:100

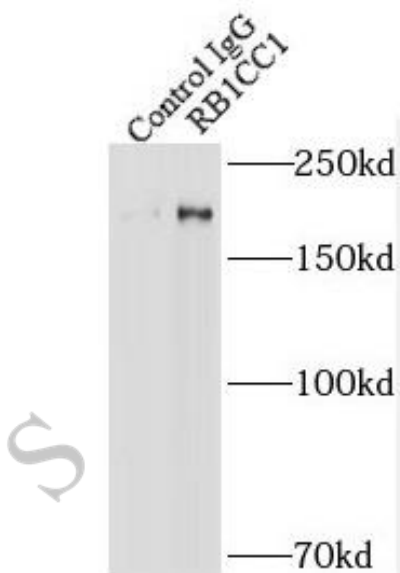
Image:



Immunohistochemistry of paraffin-embedded human breast cancer using CAF50290(RB1CC1 antibody) at dilution of 1:200



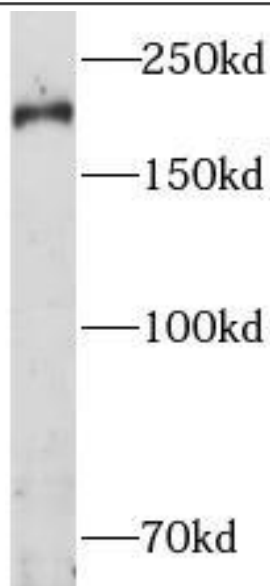
Immunofluorescent analysis of HepG2 cells, using CAF50290 (RB1CC1 antibody) at 1:25 dilution and Rhodamine-labeled goat anti-rabbit IgG (red).



IP Result of anti-RB1CC1 (IP:CAF50290, 5ug; Detection:CAF50290 1:500) with HEK-293 cells lysate 2500ug.

**This Antibody is for Research Use Only. Not for Diagnostic Procedures.**

This is a sample Antibody manual only. Always refer to the hard copy manual included in the Antibody for your experiment.



HeLa cells were subjected to SDS PAGE followed by western blot with CAF50290(RB1CC1 antibody) at dilution of 1:1000

ONLY

SAMPLE

**This Antibody is for Research Use Only. Not for Diagnostic Procedures.**

This is a sample Antibody manual only. Always refer to the hard copy manual included in the Antibody for your experiment.