

anti- RBM3 antibody

Product Information

Catalog No.:	CAF50291
Size:	100µg
Form:	liquid
Purification:	Immunogen affinity purified
Purity:	≥95% as determined by SDS-PAGE
Host:	Rabbit
Clonality:	polyclonal
Clone ID:	None
IsoType:	IgG
Storage:	PBS with 0.02% sodium azide and 50% glycerol pH 7.3, -20°C for 12 months (Avoid repeated freeze / thaw cycles.)

Background

Cold-inducible mRNA binding protein that enhances global protein synthesis at both physiological and mild hypothermic temperatures. Reduces the relative abundance of microRNAs, when overexpressed. Enhances phosphorylation of translation initiation factors and active polysome formation(By similarity).

Immunogen information

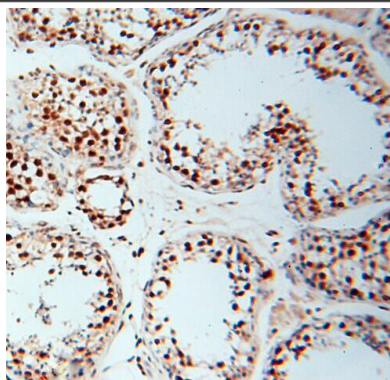
Immunogen:	RNA binding motif(RNP1, RRM) protein 3
Synonyms:	IS1 RNPL, Putative RNA binding protein 3, RBM3, RNA binding motif protein 3, RNPL
Observed MW:	17 kDa
Uniprot ID :	P98179

Application

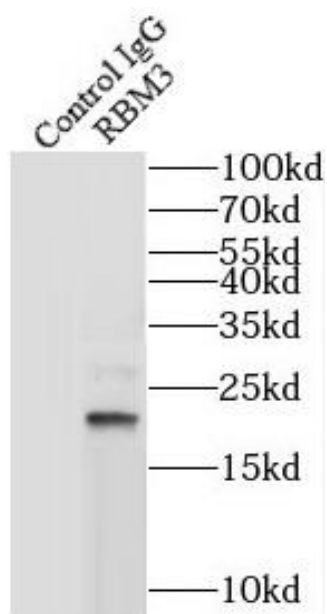
Reactivity:	Human, Mouse, Rat
Tested Application:	ELISA, WB, IHC, IP
Recommended dilution:	WB: 1:200-1:2000; IP: 1:200-1:1000; IHC: 1:50-1:500
Image:	

This Antibody is for Research Use Only. Not for Diagnostic Procedures.

This is a sample Antibody manual only. Always refer to the hard copy manual included in the Antibody for your experiment.



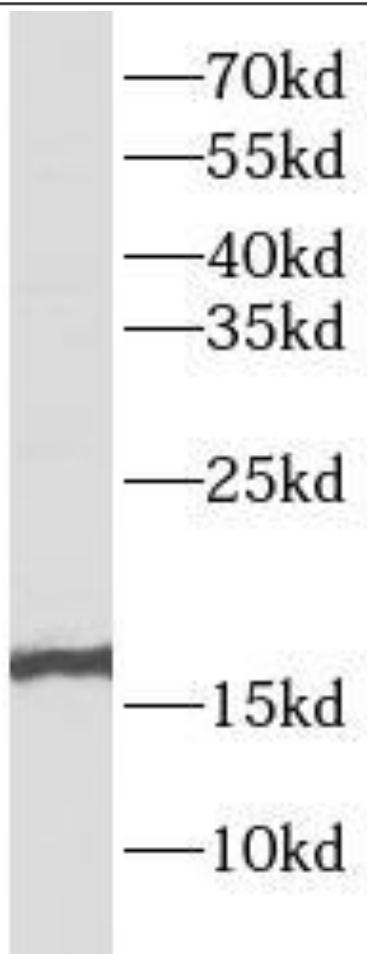
Immunohistochemistry of paraffin-embedded human testis using CAF50291(RBM3 antibody) at dilution of 1:50



IP Result of anti-RBM3 (IP:CAF50291, 4ug;
Detection:CAF50291 1:300) with MCF-7 cells
lysate 3200ug.

This Antibody is for Research Use Only. Not for Diagnostic Procedures.

This is a sample Antibody manual only. Always refer to the hard copy manual included in the Antibody for your experiment.



HeLa cells were subjected to SDS PAGE followed by western blot with CAF50291(RBM3 antibody) at dilution of 1:500

ONLY

SAMPLE

This Antibody is for Research Use Only. Not for Diagnostic Procedures.

This is a sample Antibody manual only. Always refer to the hard copy manual included in the Antibody for your experiment.