

anti- RPA2 antibody

Product Information

Catalog No.:	CAF50301
Size:	100µg
Form:	liquid
Purification:	Immunogen affinity purified
Purity:	≥95% as determined by SDS-PAGE
Host:	Rabbit
Clonality:	polyclonal
Clone ID:	None
IsoType:	IgG
Storage:	PBS with 0.02% sodium azide and 50% glycerol pH 7.3, -20°C for 12 months (Avoid repeated freeze / thaw cycles.)

Background

RPA2 (replication protein A2, 32kDa) is a protein-coding gene. Diseases associated with RPA2 include familial melanoma, and xeroderma pigmentosum, group a. GO annotations related to this gene include protein phosphatase binding and protein N-terminus binding. An important paralog of this gene is RPA4.

Immunogen information

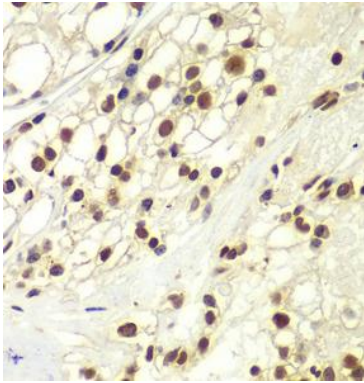
Immunogen:	replication protein A2, 32kDa
Synonyms:	REPA2, RPA32, RPA34
Observed MW:	32 kDa
Uniprot ID :	P15927

Application

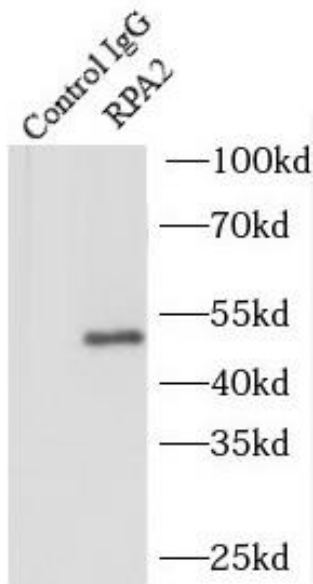
Reactivity:	Human, Mouse
Tested Application:	ELISA, WB, IHC, IF, IP
Recommended dilution:	WB: 1:500 - 1:2000; IHC: 1:50 - 1:200; IF: 1:50 - 1:100; IP: 1:50 - 1:200
Image:	

This Antibody is for Research Use Only. Not for Diagnostic Procedures.

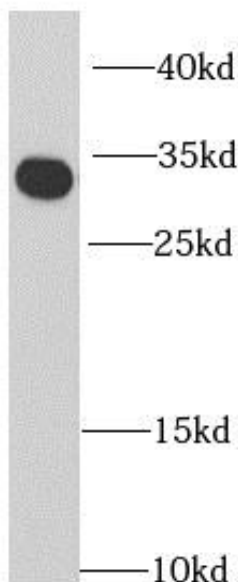
This is a sample Antibody manual only. Always refer to the hard copy manual included in the Antibody for your experiment.



Immunohistochemistry of paraffin-embedded human kidney cancer using CAF50301(RPA2 antibody) at dilution of 1:100



IP Result of anti-RPA2 (IP:CAF50301, 4ug; Detection:CAF50301 1:1000) with mouse kidney tissue lysate 4000ug.



A549 cells were subjected to SDS PAGE followed by western blot with CAF50301(RPA2 antibody) at dilution of 1:1000

This Antibody is for Research Use Only. Not for Diagnostic Procedures.

This is a sample Antibody manual only. Always refer to the hard copy manual included in the Antibody for your experiment.