

anti- RPS6 antibody

Product Information

Catalog No.:	CAF50305
Size:	100µg
Form:	liquid
Purification:	Immunogen affinity purified
Purity:	≥95% as determined by SDS-PAGE
Host:	Rabbit
Clonality:	polyclonal
Clone ID:	None
IsoType:	IgG
Storage:	PBS with 0.02% sodium azide and 50% glycerol pH 7.3, -20°C for 12 months (Avoid repeated freeze / thaw cycles.)

Background

May play an important role in controlling cell growth and proliferation through the selective translation of particular classes of mRNA.

Immunogen information

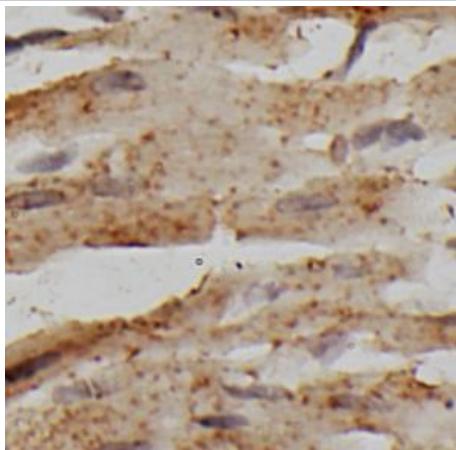
Immunogen:	ribosomal protein S6
Synonyms:	40S ribosomal protein S6, Phosphoprotein NP33, ribosomal protein S6, RPS6
Observed MW:	35 kDa
Uniprot ID :	P62753

Application

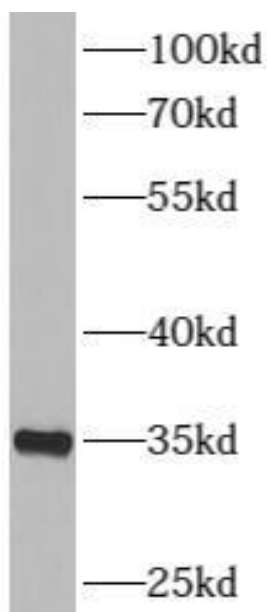
Reactivity:	Human, Mouse, Rat
Tested Application:	ELISA, WB, IHC
Recommended dilution:	WB: 1:500-1:2000; IHC: 1:20-1:200
Image:	

This Antibody is for Research Use Only. Not for Diagnostic Procedures.

This is a sample Antibody manual only. Always refer to the hard copy manual included in the Antibody for your experiment.



Immunohistochemistry of paraffin-embedded rat heart using CAF50305(RPS6 Antibody) at dilution of 1:50



mouse liver tissue were subjected to SDS PAGE followed by western blot with CAF50305(RPS6 antibody) at dilution of 1:1000

SAMPLE

This Antibody is for Research Use Only. Not for Diagnostic Procedures.

This is a sample Antibody manual only. Always refer to the hard copy manual included in the Antibody for your experiment.