

anti- SAA1 antibody

Product Information

Catalog No.:	CAF50312
Size:	100µg
Form:	liquid
Purification:	Immunogen affinity purified
Purity:	≥95% as determined by SDS-PAGE
Host:	Rabbit
Clonality:	polyclonal
Clone ID:	None
IsoType:	IgG
Storage:	PBS with 0.02% sodium azide and 50% glycerol pH 7.3, -20°C for 12 months (Avoid repeated freeze / thaw cycles.)

Background

Major acute phase protein.

Immunogen information

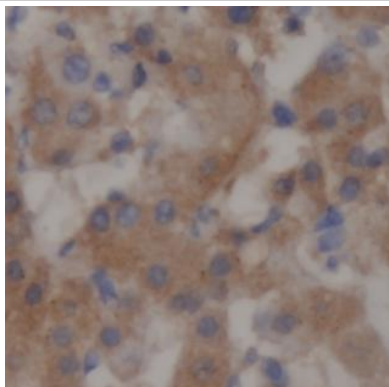
Immunogen:	serum amyloid A1
Synonyms:	PIG4, SAA, SAA1, Serum amyloid A protein, serum amyloid A1, TP53I4
Observed MW:	14 kDa
Uniprot ID :	P0DJ18

Application

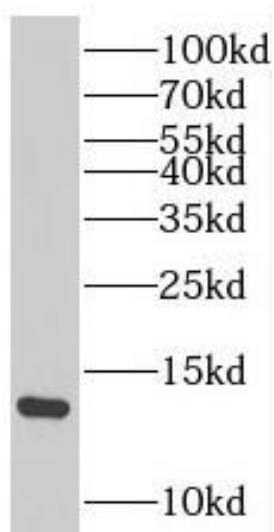
Reactivity:	Human, Mouse, Rat
Tested Application:	ELISA, IHC, WB
Recommended dilution:	WB: 1:500 - 1:2000; IHC: 1:50 - 1:200
Image:	

This Antibody is for Research Use Only. Not for Diagnostic Procedures.

This is a sample Antibody manual only. Always refer to the hard copy manual included in the Antibody for your experiment.



Immunohistochemical of paraffin-embedded human liver using CAF50312(SAA1 antibody) at dilution of 1:50



Rat liver tissue were subjected to SDS PAGE followed by western blot with CAF50312(SAA1 antibody) at dilution of 1:1000

SAMPLE

ONLY

This Antibody is for Research Use Only. Not for Diagnostic Procedures.

This is a sample Antibody manual only. Always refer to the hard copy manual included in the Antibody for your experiment.