

## anti- SCIN antibody

### Product Information

Catalog No.:	CAF50314
Size:	100µg
Form:	liquid
Purification:	Immunogen affinity purified
Purity:	≥95% as determined by SDS-PAGE
Host:	Rabbit
Clonality:	polyclonal
Clone ID:	None
IsoType:	IgG
Storage:	PBS with 0.02% sodium azide and 50% glycerol pH 7.3, -20°C for 12 months (Avoid repeated freeze / thaw cycles.)

### Background

Ca(2+)-dependent actin filament-severing protein that is presumed to have a regulatory function in exocytosis by affecting the organization of the microfilament network underneath the plasma membrane. In vitro, also has barbed end capping and nucleating activities in the presence of Ca(2+). Regulates chondrocyte proliferation and differentiation. MAP kinases p38 and ERK1/2 mediate the adseverin-induced accelerated differentiation of non-hypertrophic chondrocytes (By similarity).

### Immunogen information

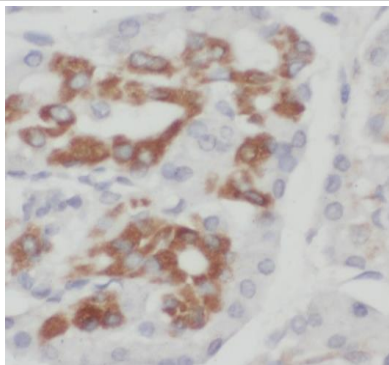
Immunogen:	scinderin
Synonyms:	Adseverin, KIAA1905, SCIN, scinderin
Observed MW:	75-80 kDa
Uniprot ID :	Q9Y6U3

### Application

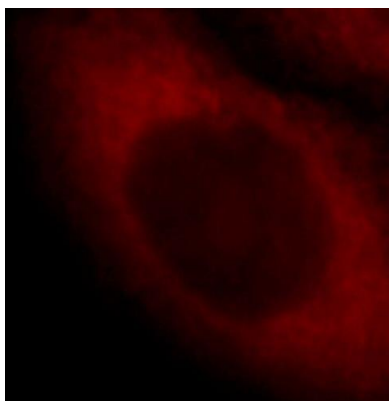
Reactivity:	Human, Mouse, Rat
Tested Application:	ELISA, WB, IHC, IF, IP
Recommended dilution:	WB: 1:500-1:5000; IP: 1:200-1:1000; IHC: 1:20-1:200; IF: 1:10-1:100
Image:	

**This Antibody is for Research Use Only. Not for Diagnostic Procedures.**

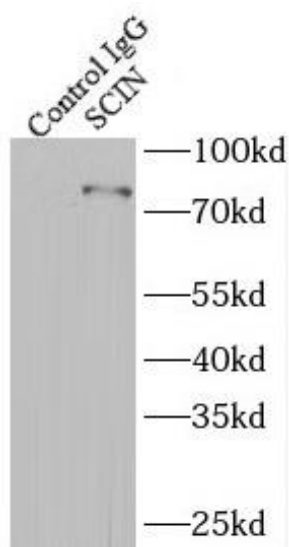
This is a sample Antibody manual only. Always refer to the hard copy manual included in the Antibody for your experiment.



Immunohistochemistry of paraffin-embedded human pancreas cancer using CAF50314(SCIN antibody) at dilution of 1:50



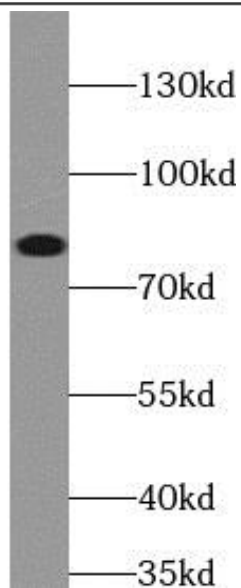
Immunofluorescent analysis of HepG2 cells, using SCIN antibody CAF50314 at 1:25 dilution and Rhodamine-labeled goat anti-rabbit IgG (red).



IP Result of anti-SCIN (IP:CAF50314, 4ug; Detection:CAF50314 1:300) with human placenta tissue lysate 2800ug.

**This Antibody is for Research Use Only. Not for Diagnostic Procedures.**

This is a sample Antibody manual only. Always refer to the hard copy manual included in the Antibody for your experiment.



human placenta tissue were subjected to SDS PAGE followed by western blot with CAF50314(SCIN antibody) at dilution of 1:300

ONLY

SAMPLE

**This Antibody is for Research Use Only. Not for Diagnostic Procedures.**

This is a sample Antibody manual only. Always refer to the hard copy manual included in the Antibody for your experiment.