

## anti- SEPT2 antibody

### Product Information

Catalog No.:	CAF50317
Size:	100µg
Form:	liquid
Purification:	Immunogen affinity purified
Purity:	≥95% as determined by SDS-PAGE
Host:	Rabbit
Clonality:	polyclonal
Clone ID:	None
IsoType:	IgG
Storage:	PBS with 0.02% sodium azide and 50% glycerol pH 7.3, -20°C for 12 months (Avoid repeated freeze / thaw cycles.)

### Background

Filament-forming cytoskeletal GTPase. Required for normal organization of the actin cytoskeleton. Plays a role in the biogenesis of polarized columnar-shaped epithelium by maintaining polyglutamylated microtubules, thus facilitating efficient vesicle transport, and by impeding MAP4 binding to tubulin. Required for the progression through mitosis. Forms a scaffold at the midplane of the mitotic spindle required to maintain CENPE localization at kinetochores and consequently chromosome congression. During anaphase, may be required for chromosome segregation and spindle elongation. Plays a role in ciliogenesis and collective cell movements. In cilia, required for the integrity of the diffusion barrier at the base of the primary cilium that prevents diffusion of transmembrane proteins between the cilia and plasma membranes: probably acts by regulating the assembly of the tectonic-like complex(also named B9 complex) by localizing TMEM231 protein. May play a role in the internalization of 2 intracellular microbial pathogens, *Listeria monocytogenes* and *Shigella flexneri*.

### Immunogen information

Immunogen:	septin 2
Synonyms:	hNedd5, NEDD 5, NEDD5, SEPT2, SEPT2/septin 2, septin 2, septin2
Observed MW:	45 kDa
Uniprot ID :	Q15019

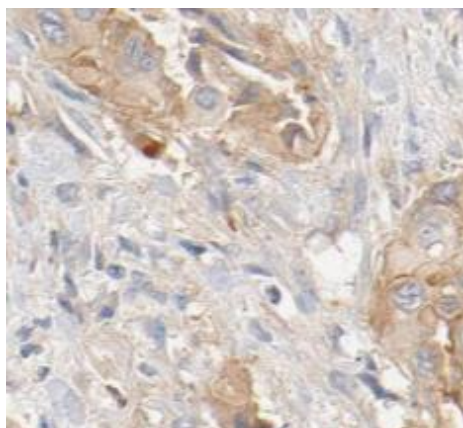
### Application

Reactivity:	Human, Mouse, Rat
Tested Application:	ELISA, IHC, IP, IF, WB, FC
Recommended dilution:	WB: 1:500-1:4000; IP: 1:500-1:2000; IHC: 1:20-1:200; IF: 1:20-1:200

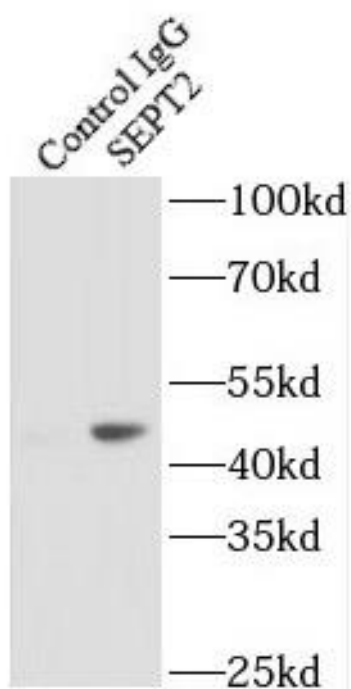
**This Antibody is for Research Use Only. Not for Diagnostic Procedures.**

This is a sample Antibody manual only. Always refer to the hard copy manual included in the Antibody for your experiment.

Image:



Immunohistochemistry of paraffin-embedded human pancreas cancer using CAF50317(SEPT2 antibody) at dilution of 1:50

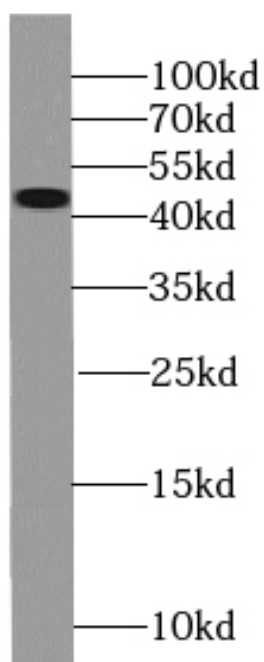


IP Result of anti-SEPT2 (IP:CAF50317, 3ug; Detection:CAF50317 1:1000) with mouse brain tissue lysate 5000ug.

**This Antibody is for Research Use Only. Not for Diagnostic Procedures.**

This is a sample Antibody manual only. Always refer to the hard copy manual included in the Antibody for your experiment.

HeLa cells were subjected to SDS PAGE followed by western blot with CAF50317(SEPT2 antibody) at dilution of 1:1000



ONLY

SAMPLE

**This Antibody is for Research Use Only. Not for Diagnostic Procedures.**

This is a sample Antibody manual only. Always refer to the hard copy manual included in the Antibody for your experiment.