

anti- SEPT7 antibody

Product Information

Catalog No.:	CAF50318
Size:	100µg
Form:	liquid
Purification:	Immunogen affinity purified
Purity:	≥95% as determined by SDS-PAGE
Host:	Rabbit
Clonality:	polyclonal
Clone ID:	None
IsoType:	IgG
Storage:	PBS with 0.02% sodium azide and 50% glycerol pH 7.3, -20°C for 12 months (Avoid repeated freeze / thaw cycles.)

Background

This gene encodes a protein that is highly similar to the CDC10 protein of *Saccharomyces cerevisiae*. The protein also shares similarity with Diff 6 of *Drosophila* and with H5 of mouse. Each of these similar proteins, including the yeast CDC10, contains a GTP-binding motif. The yeast CDC10 protein is a structural component of the 10 nm filament which lies inside the cytoplasmic membrane and is essential for cytokinesis. This human protein functions in gliomagenesis and in the suppression of glioma cell growth, and it is required for the association of centromere-associated protein E with the kinetochore. Alternative splicing results in multiple transcript variants. Several related pseudogenes have been identified on chromosomes 5, 7, 9, 10, 11, 14, 17 and 19.

Immunogen information

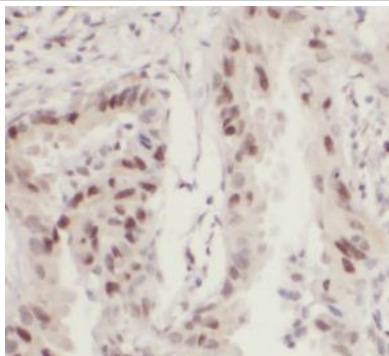
Immunogen:	septin 7
Synonyms:	CDC10, CDC10 protein homolog, CDC3, Nbla02942, SEPT7, SEPT7A, septin 7
Observed MW:	51 kDa
Uniprot ID :	Q16181

Application

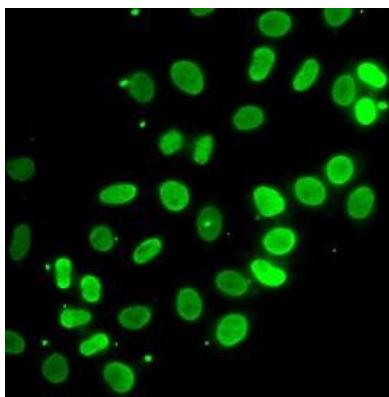
Reactivity:	Human, Mouse, Rat
Tested Application:	ELISA, IHC, IF, WB
Recommended dilution:	WB: 1:1000 - 1:2000; IHC: 1:50 - 1:200; IF: 1:50 - 1:100
Image:	

This Antibody is for Research Use Only. Not for Diagnostic Procedures.

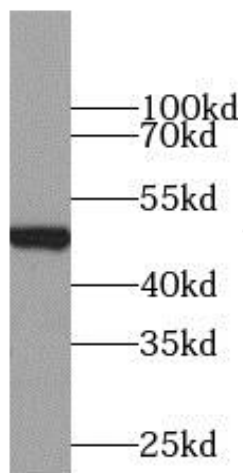
This is a sample Antibody manual only. Always refer to the hard copy manual included in the Antibody for your experiment.



Immunohistochemistry of paraffin-embedded human lung cancer using CAF50318(SEPT7 antibody) at dilution of 1:100



Immunofluorescence analysis of HeLa cells using CAF50318(SEPT7 antibody).



HepG2 cells were subjected to SDS PAGE followed by western blot with CAF50318(SEPT7 antibody) at dilution of 1:1000

This Antibody is for Research Use Only. Not for Diagnostic Procedures.

This is a sample Antibody manual only. Always refer to the hard copy manual included in the Antibody for your experiment.