

anti- SGLT3/SLC5A4 antibody

Product Information

Catalog No.:	CAF50322
Size:	100µg
Form:	liquid
Purification:	Immunogen affinity purified
Purity:	≥95% as determined by SDS-PAGE
Host:	Rabbit
Clonality:	polyclonal
IsoType:	IgG
Storage:	PBS with 0.02% sodium azide and 50% glycerol pH 7.3, -20°C for 12 months (Avoid repeated freeze / thaw cycles.)

Immunogen information

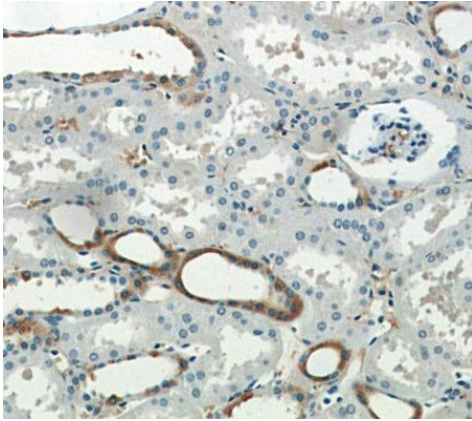
Immunogen:	solute carrier family 5(low affinity glucose cotransporter), member 4
Synonyms:	Sodium transporter,SAAT1, SGLT3, SLC5A4, Sodium/glucose cotransporter 3
Observed MW:	70 kDa
Uniprot ID :	Q9NY91

Application

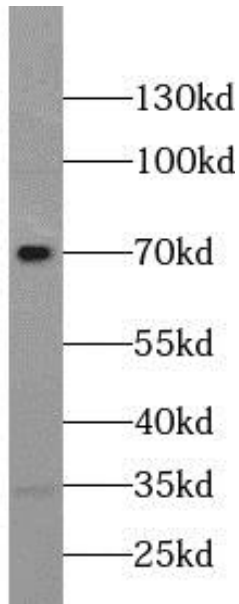
Reactivity:	Human, Mouse, Rat
Tested Application:	ELISA, WB, IHC
Recommended dilution:	WB: 1:500-1:5000; IP: 1:200-1:2000; IHC: 1:20-1:200
Image:	

This Antibody is for Research Use Only. Not for Diagnostic Procedures.

This is a sample Antibody manual only. Always refer to the hard copy manual included in the Antibody for your experiment.



Immunohistochemistry of paraffin-embedded human kidney slide using CAF50322(SLC5A4 Antibody) at dilution of 1:50



mouse kidney tissue were subjected to SDS PAGE followed by western blot with CAF50322(SLC5A4 Antibody) at dilution of 1:1000

This Antibody is for Research Use Only. Not for Diagnostic Procedures.

This is a sample Antibody manual only. Always refer to the hard copy manual included in the Antibody for your experiment.