

## anti- SH3PXD2A antibody

### Product Information

|               |   |
|---------------|---|
| Catalog No.:  | CAF50324  |
| Size:         | 100µg   |
| Form:         | liquid  |
| Purification: | Immunogen affinity purified   |
| Purity:       | ≥95% as determined by SDS-PAGE  |
| Host:         | Rabbit  |
| Clonality:    | polyclonal  |
| Clone ID:     | None  |
| IsoType:      | IgG   |
| Storage:      | PBS with 0.02% sodium azide and 50% glycerol pH 7.3, -20°C for 12 months (Avoid repeated freeze / thaw cycles.) |

### Background

Adapter protein involved in invadopodia and podosome formation, extracellular matrix degradation and invasiveness of some cancer cells. Binds matrix metalloproteinases(ADAMs), NADPH oxidases(NOXs) and phosphoinositides. Acts as an organizer protein that allows NOX1- or NOX3-dependent reactive oxygen species(ROS) generation and ROS localization. In association with ADAM12, mediates the neurotoxic effect of beta-amyloid peptide.

### Immunogen information

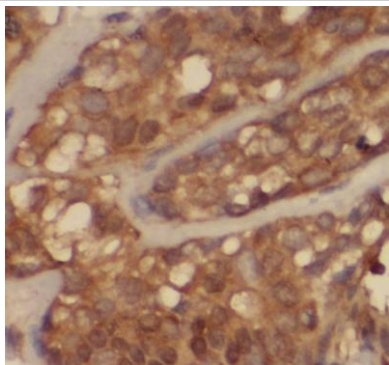
|              |                              |
|--------------|------------------------------|
| Immunogen:   | SH3 and PX domains 2A        |
| Synonyms:    | FISH, KIAA0418, SH3MD1, TKS5 |
| Observed MW: | 140 kDa                      |
| Uniprot ID : | Q5TCZ1                       |

### Application

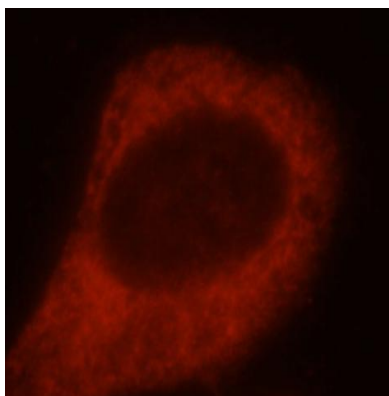
|                       |   |
|-----------------------|---|
| Reactivity:           | Human, Mouse, Rat                                 |
| Tested Application:   | ELISA, WB, IHC, IF                                |
| Recommended dilution: | WB: 1:500-1:1000; IHC: 1:20-1:200; IF: 1:10-1:100 |
| Image:                |   |

**This Antibody is for Research Use Only. Not for Diagnostic Procedures.**

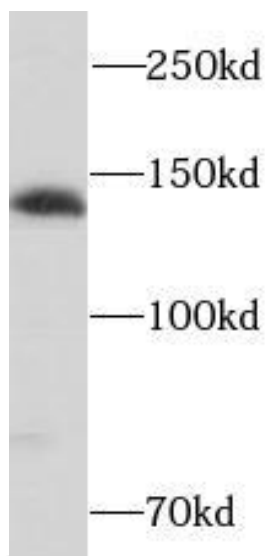
This is a sample Antibody manual only. Always refer to the hard copy manual included in the Antibody for your experiment.



Immunohistochemistry of paraffin-embedded human breast cancer using CAF50324(SH3PXD2A antibody) at dilution of 1:50



Immunofluorescent analysis of HepG2 cells using CAF50324 (SH3PXD2A antibody) at dilution of 1:25 and Rhodamine-Goat anti-Rabbit IgG



HeLa cells were subjected to SDS PAGE followed by western blot with CAF50324(SH3PXD2A antibody) at dilution of 1:500

**This Antibody is for Research Use Only. Not for Diagnostic Procedures.**

This is a sample Antibody manual only. Always refer to the hard copy manual included in the Antibody for your experiment.