

anti- SHH antibody

Product Information

Catalog No.:	CAF50325
Size:	100µg
Form:	liquid
Purification:	Immunogen affinity purified
Purity:	≥95% as determined by SDS-PAGE
Host:	Rabbit
Clonality:	polyclonal
IsoType:	IgG
Storage:	PBS with 0.02% sodium azide and 50% glycerol pH 7.3, -20°C for 12 months (Avoid repeated freeze / thaw cycles.)

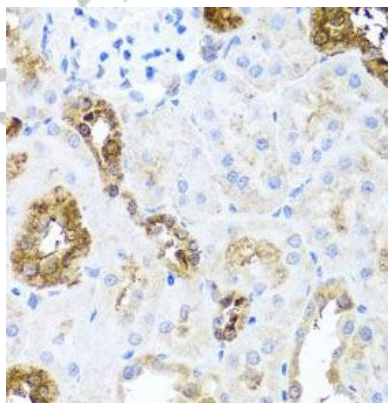
Immunogen information

Immunogen:	sonic hedgehog homolog (Drosophila)
Synonyms:	HHG 1, HHG1, HLP3, HPE3, MCOPCB5, SHH, SMMCI, Sonic hedgehog protein, TPT, TPTPS
Observed MW:	47 kDa
Uniprot ID :	Q15465

Application

Reactivity:	Human, Mouse, Rat
Tested Application:	ELISA, WB, IHC
Recommended dilution:	WB: 1:500 - 1:2000; IHC: 1:50 - 1:100

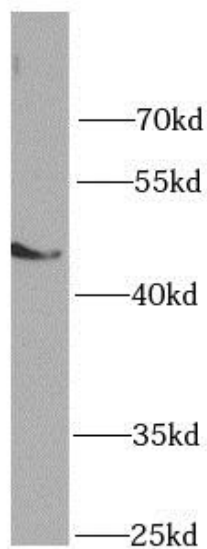
Image:



Immunohistochemistry of paraffin-embedded rat kidney using CAF50325(SHH Antibody) at dilution of 1:100

This Antibody is for Research Use Only. Not for Diagnostic Procedures.

This is a sample Antibody manual only. Always refer to the hard copy manual included in the Antibody for your experiment.



mouse liver tissue were subjected to SDS PAGE followed by western blot with CAF50325(SHH antibody) at dilution of 1:1000

ONLY

SAMPLE

This Antibody is for Research Use Only. Not for Diagnostic Procedures.

This is a sample Antibody manual only. Always refer to the hard copy manual included in the Antibody for your experiment.