

anti- SLC30A8/ZNT8-Specific antibody

Product Information

Catalog No.:	CAF50331
Size:	100µg
Form:	liquid
Purification:	Immunogen affinity purified
Purity:	≥95% as determined by SDS-PAGE
Host:	Rabbit
Clonality:	polyclonal
Clone ID:	None
IsoType:	IgG
Storage:	PBS with 0.02% sodium azide and 50% glycerol pH 7.3, -20°C for 12 months (Avoid repeated freeze / thaw cycles.)

Background

SLC30A8(also named as ZNT8) encodes the secretory granule zinc transporter, permitting cellular efflux of zinc. SLC30A8 was recently defined as a autoantigen candidates of type 2 diabetes, although the molecular mechanism through which this phenotype is manifest is incompletely understood.

Immunogen information

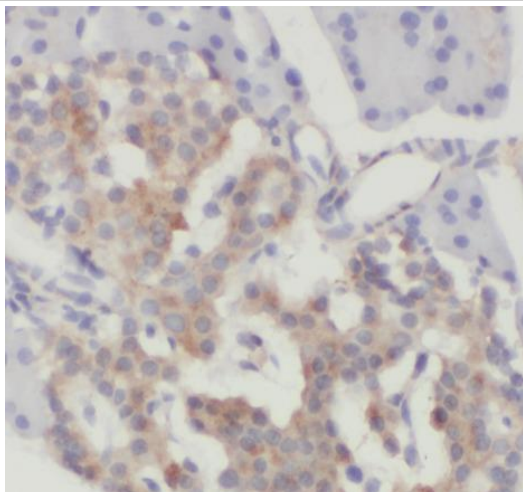
Immunogen:	solute carrier family 30(zinc transporter), member 8
Synonyms:	SLC30A8, Zinc transporter 8, ZnT 8, ZNT8
Observed MW:	50 kDa
Uniprot ID :	Q8IWU4

Application

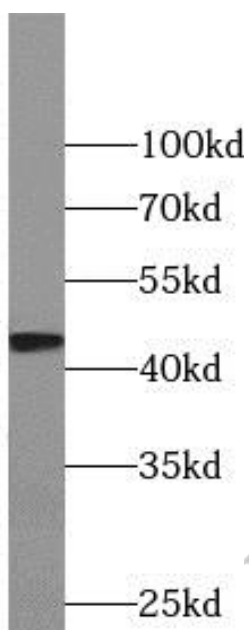
Reactivity:	Human, Mouse, Rat
Tested Application:	ELISA, WB, IHC, IF
Recommended dilution:WB:	1:200-1:2000; IHC: 1:20-1:200
Image:	

This Antibody is for Research Use Only. Not for Diagnostic Procedures.

This is a sample Antibody manual only. Always refer to the hard copy manual included in the Antibody for your experiment.



Immunohistochemistry of paraffin-embedded human pancreas using CAF50331(SLC30A8-Specific antibody) at dilution of 1:50



mouse pancreas tissue were subjected to SDS PAGE followed by western blot with CAF50331(SLC30A8-Specific antibody) at dilution of 1:500

This Antibody is for Research Use Only. Not for Diagnostic Procedures.

This is a sample Antibody manual only. Always refer to the hard copy manual included in the Antibody for your experiment.