

## anti- SOD2 antibody

### Product Information

|               |   |
|---------------|---|
| Catalog No.:  | CAF50334  |
| Size:         | 100µg   |
| Form:         | liquid  |
| Purification: | Immunogen affinity purified   |
| Purity:       | ≥95% as determined by SDS-PAGE  |
| Host:         | Rabbit  |
| Clonality:    | polyclonal  |
| Clone ID:     | None  |
| IsoType:      | IgG   |
| Storage:      | PBS with 0.02% sodium azide and 50% glycerol pH 7.3, -20°C for 12 months (Avoid repeated freeze / thaw cycles.) |

### Background

SOD2 (superoxide dismutase 2, mitochondrial) is also named as IPOB, MNSOD, SODM, Mn-SOD and belongs to the iron/manganese superoxide dismutase family. It is a marker of mitochondria, which is restricted to the perinuclear area in a cell with aggregate formation of mutant SOD1 (PMID:12659845). It functions as the first line of antioxidant defense against highly reactive superoxide radicals and it appears to be early predictors for survival in septic patients with MIF (PMID:20863520). It has 2 isoforms with the molecular weight of 25 kDa and 21 kDa.

### Immunogen information

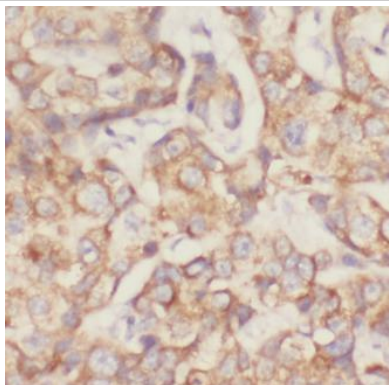
|              |  |
|--------------|--|
| Immunogen:   | superoxide dismutase 2, mitochondrial                        |
| Synonyms:    | Superoxide dismutase [Mn], mitochondrial (EC:1.15.1.1), SOD2 |
| Observed MW: | 25 kDa   |
| Uniprot ID : | P04179   |

### Application

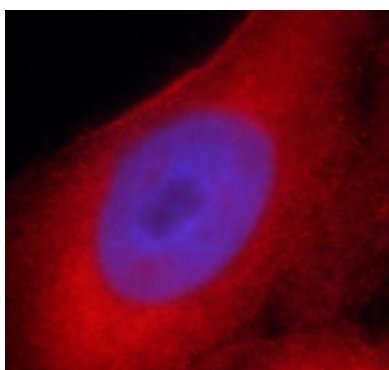
|                       |  |
|-----------------------|--|
| Reactivity:           | Human, Mouse, Rat  |
| Tested Application:   | ELISA, WB, IF, IHC, IP   |
| Recommended dilution: | WB: 1:500-1:5000; IP: 1:500-1:5000; IHC: 1:100-1:400; IF: 1:20-1:200 |
| Image:                |  |

**This Antibody is for Research Use Only. Not for Diagnostic Procedures.**

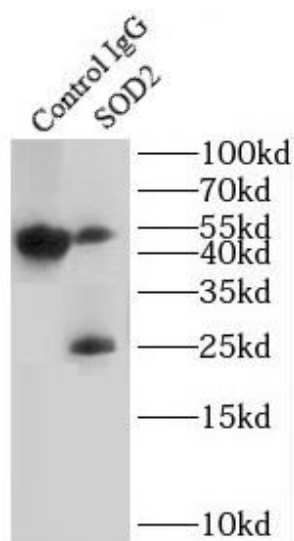
This is a sample Antibody manual only. Always refer to the hard copy manual included in the Antibody for your experiment.



Immunohistochemistry of paraffin-embedded human breast cancer tissue slide using CAF50334(SOD2 Antibody) at dilution of 1:200 heat mediated antigen retrieved with Tris-EDTA buffer(pH9).



Immunofluorescent analysis of HeLa cells using CAF50334 (SOD2 antibody) at dilution of 1:50 and Rhodamine-Goat anti-Rabbit IgG

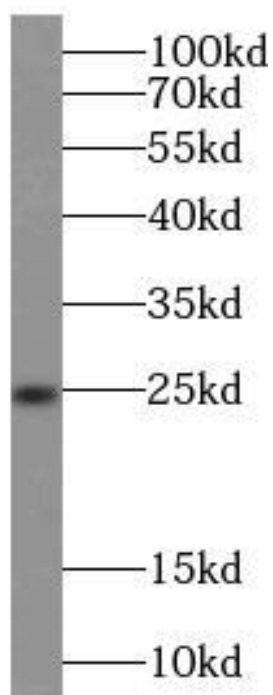


IP Result of anti-SOD2 (IP:CAF50334, 4ug; Detection:CAF50334 1:1000) with mouse brain tissue lysate 4000ug.

**This Antibody is for Research Use Only. Not for Diagnostic Procedures.**

This is a sample Antibody manual only. Always refer to the hard copy manual included in the Antibody for your experiment.

HeLa cells were subjected to SDS PAGE followed by western blot with CAF50334(SOD2 antibody) at dilution of 1:1000



ONLY

SAMPLE

**This Antibody is for Research Use Only. Not for Diagnostic Procedures.**

This is a sample Antibody manual only. Always refer to the hard copy manual included in the Antibody for your experiment.