

anti- SPOP antibody

Product Information

Catalog No.:	CAF50338
Size:	100µg
Form:	liquid
Purification:	Immunogen affinity purified
Purity:	≥95% as determined by SDS-PAGE
Host:	Rabbit
Clonality:	polyclonal
Clone ID:	None
IsoType:	IgG
Storage:	PBS with 0.02% sodium azide and 50% glycerol pH 7.3, -20°C for 12 months (Avoid repeated freeze / thaw cycles.)

Background

Component of a cullin-RING-based BCR(BTB-CUL3-RBX1) E3 ubiquitin-protein ligase complex that mediates the ubiquitination of target proteins, leading most often to their proteasomal degradation. In complex with CUL3, involved in ubiquitination and proteasomal degradation of BRMS1, DAXX, PDX1/IPF1, GLI2 and GLI3. In complex with CUL3, involved in ubiquitination of H2AFY and BMI1; this does not lead to their proteasomal degradation. Inhibits transcriptional activation of PDX1/IPF1 targets, such as insulin, by promoting PDX1/IPF1 degradation. The cullin-RING-based BCR(BTB-CUL3-RBX1) E3 ubiquitin-protein ligase complex containing homodimeric SPOP has higher ubiquitin ligase activity than the complex that contains the heterodimer formed by SPOP and SPOPL.

Immunogen information

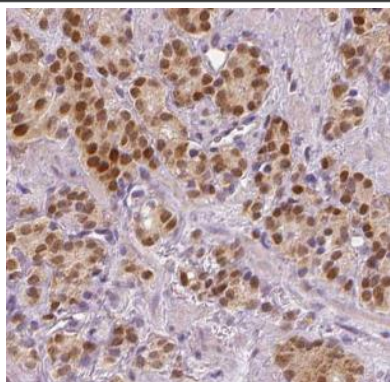
Immunogen:	speckle-type POZ protein
Synonyms:	HIB homolog 1, Roadkill homolog 1, speckle type POZ protein, SPOP, TEF2
Observed MW:	42 kDa
Uniprot ID :	O43791

Application

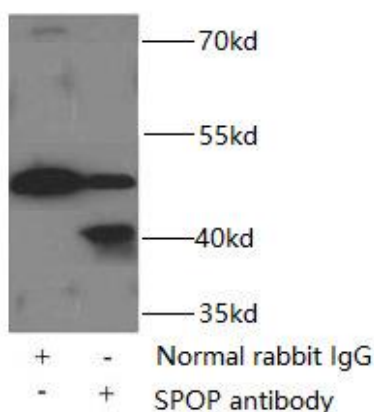
Reactivity:	Human, Mouse, Rat
Tested Application:	ELISA, WB, IHC, IP
Recommended dilution:	WB: 1:500-1:2000; IHC: 1:50-1:500; IP : 1:500-1:1000
Image:	

This Antibody is for Research Use Only. Not for Diagnostic Procedures.

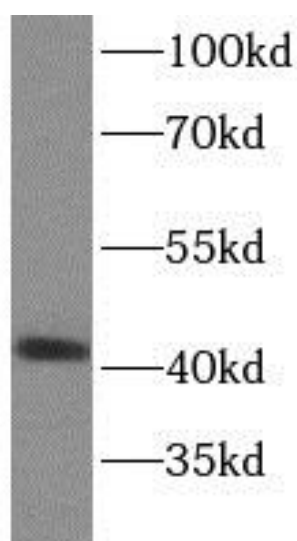
This is a sample Antibody manual only. Always refer to the hard copy manual included in the Antibody for your experiment.



Immunohistochemistry of paraffin-embedded human prostate cancer tissue slide using CAF50338(SPOP Antibody) at dilution of 1:200



IP Result of anti-SPOP (IP:CAF50338, 3ug; Detection:CAF50338 1:500) with HeLa cell lysate 3000ug.



HeLa cells were subjected to SDS PAGE followed by western blot with CAF50338 (SPOP antibody) at dilution of 1:500

This Antibody is for Research Use Only. Not for Diagnostic Procedures.

This is a sample Antibody manual only. Always refer to the hard copy manual included in the Antibody for your experiment.