

anti- STAT3 antibody

Product Information

Catalog No.:	CAF50341
Size:	100µg
Form:	liquid
Purification:	Immunogen affinity purified
Purity:	≥95% as determined by SDS-PAGE
Host:	Rabbit
Clonality:	polyclonal
Clone ID:	None
IsoType:	IgG
Storage:	PBS with 0.02% sodium azide and 50% glycerol pH 7.3, -20°C for 12 months (Avoid repeated freeze / thaw cycles.)

Background

The protein encoded by this gene is a member of the STAT protein family. In response to cytokines and growth factors, STAT family members are phosphorylated by the receptor associated kinases, and then form homo- or heterodimers that translocate to the cell nucleus where they act as transcription activators. This protein is activated through phosphorylation in response to various cytokines and growth factors including IFNs, EGF, IL5, IL6, HGF, LIF and BMP2. This protein mediates the expression of a variety of genes in response to cell stimuli, and thus plays a key role in many cellular processes such as cell growth and apoptosis. The small GTPase Rac1 has been shown to bind and regulate the activity of this protein. PIAS3 protein is a specific inhibitor of this protein. Mutations in this gene are associated with infantile-onset multisystem autoimmune disease and hyper-immunoglobulin E syndrome. Alternative splicing results in multiple transcript variants encoding distinct isoforms.

Immunogen information

Immunogen:	signal transducer and activator of transcription 3 (acute-phase response factor)
Synonyms:	Acute phase response factor, APRF, HIES, STAT3
Observed MW:	85 kDa
Uniprot ID :	P40763

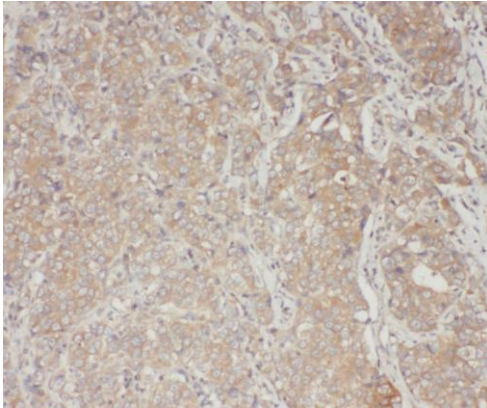
Application

Reactivity:	Human, Mouse
Tested Application:	ELISA, WB, IHC, IF
Recommended dilution:	WB: 1:200 - 1:500; IHC: 1:50 - 1:200; IF: 1:10-1:100

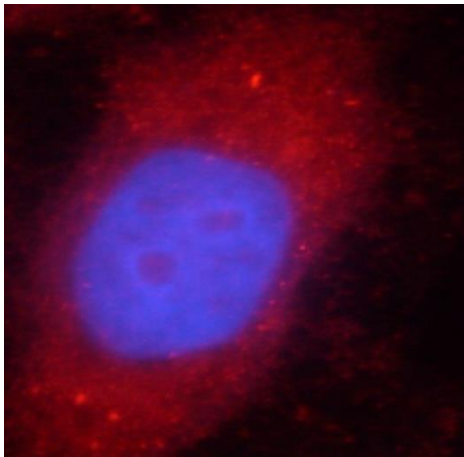
This Antibody is for Research Use Only. Not for Diagnostic Procedures.

This is a sample Antibody manual only. Always refer to the hard copy manual included in the Antibody for your experiment.

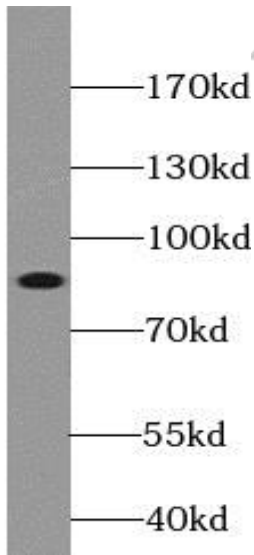
Image:



Immunohistochemistry of paraffin-embedded human breast cancer slide using CAF50341(STAT3 Antibody) at dilution of 1:50



Immunofluorescent analysis of HeLa cells using CAF50341 (STAT3 Antibody) at dilution of 1:25 and Rhodamine-Goat anti-Rabbit IgG



HeLa cells were subjected to SDS PAGE followed by western blot with CAF50341(STAT3 antibody) at dilution of 1:300

This Antibody is for Research Use Only. Not for Diagnostic Procedures.

This is a sample Antibody manual only. Always refer to the hard copy manual included in the Antibody for your experiment.