

anti- STAT4 antibody

Product Information

| | |
|---------------|---|
| Catalog No.: | CAF50342 |
| Size: | 100µg |
| Form: | liquid |
| Purification: | Immunogen affinity purified |
| Purity: | ≥95% as determined by SDS-PAGE |
| Host: | Rabbit |
| Clonality: | polyclonal |
| Clone ID: | None |
| IsoType: | IgG |
| Storage: | PBS with 0.02% sodium azide and 50% glycerol pH 7.3, -20°C for 12 months (Avoid repeated freeze / thaw cycles.) |

Background

Carries out a dual function: signal transduction and activation of transcription. Involved in IL12 signaling.

Immunogen information

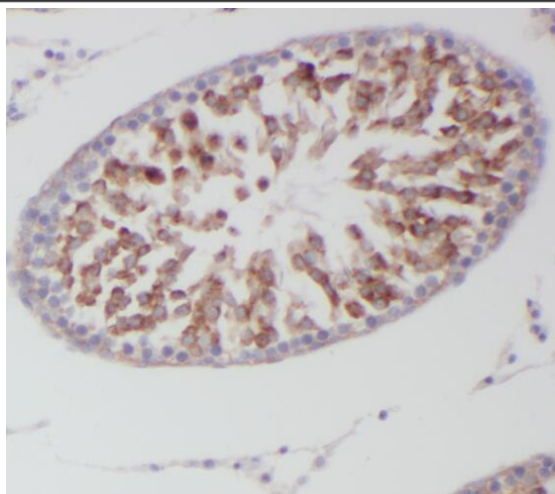
| | |
|--------------|--|
| Immunogen: | signal transducer and activator of transcription 4 |
| Synonyms: | SLEB11, STAT4 |
| Observed MW: | 85 kDa |
| Uniprot ID : | Q14765 |

Application

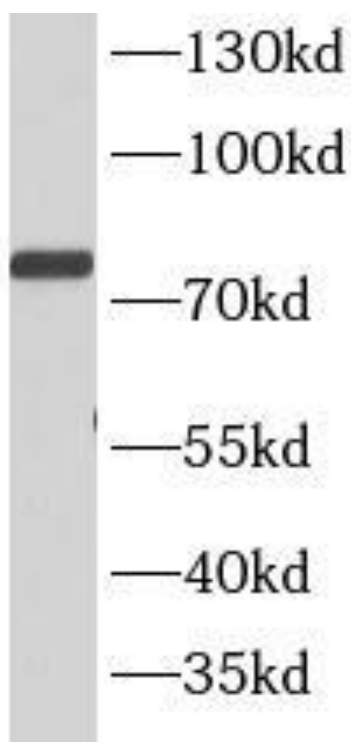
| | |
|-----------------------|---------------------------------------|
| Reactivity: | Human |
| Tested Application: | ELISA, WB, IHC |
| Recommended dilution: | WB: 1:500 - 1:2000; IHC: 1:50 - 1:500 |
| Image: | |

This Antibody is for Research Use Only. Not for Diagnostic Procedures.

This is a sample Antibody manual only. Always refer to the hard copy manual included in the Antibody for your experiment.



Immunohistochemistry of paraffin-embedded human testis tissue slide using CAF50342(STAT4 Antibody) at dilution of 1:200



HeLa cells were subjected to SDS PAGE followed by western blot with CAF50342(STAT4 antibody) at dilution of 1:1000

This Antibody is for Research Use Only. Not for Diagnostic Procedures.

This is a sample Antibody manual only. Always refer to the hard copy manual included in the Antibody for your experiment.