

anti- Sur-8 antibody

Product Information

Catalog No.:	CAF50347
Size:	100µg
Form:	liquid
Purification:	Immunogen affinity purified
Purity:	≥95% as determined by SDS-PAGE
Host:	Rabbit
Clonality:	polyclonal
Clone ID:	None
IsoType:	IgG
Storage:	PBS with 0.02% sodium azide and 50% glycerol pH 7.3, -20°C for 12 months (Avoid repeated freeze / thaw cycles.)

Immunogen information

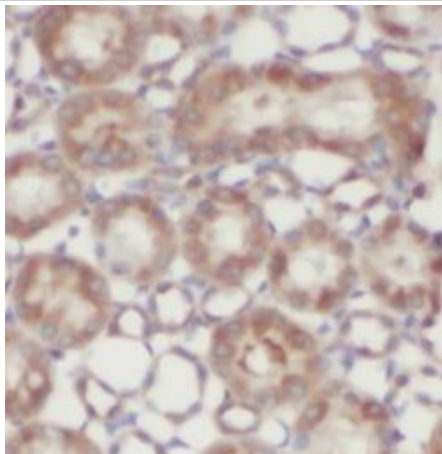
Immunogen:	Protein sur 8 homolog
Synonyms:	FLJ60412, KIAA0862, Protein soc 2 homolog, Protein sur 8 homolog, SHOC2, SIAA0862, SOC 2, SOC2, SUR 8, SUR8, sur-8
Observed MW:	65 kDa
Uniprot ID :	Q9UQ13

Application

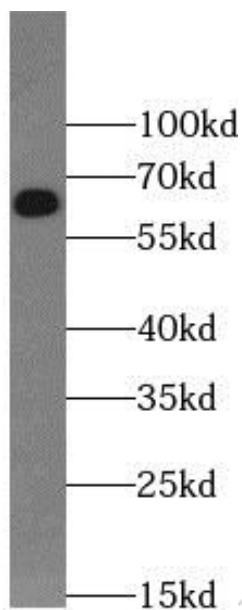
Reactivity:	Human, Mouse, Rat
Tested Application:	ELISA, IHC, WB
Recommended dilution:	WB: 1:500-1:1000; IHC: 1:50-1:500
Image:	

This Antibody is for Research Use Only. Not for Diagnostic Procedures.

This is a sample Antibody manual only. Always refer to the hard copy manual included in the Antibody for your experiment.



Immunohistochemistry of paraffin-embedded human kidney tissue slide using CAF50347(SHOC2 Antibody) at dilution of 1:200



Jurkat cells were subjected to SDS PAGE followed by western blot with CAF50347(SHOC2 Antibody) at dilution of 1:500

This Antibody is for Research Use Only. Not for Diagnostic Procedures.

This is a sample Antibody manual only. Always refer to the hard copy manual included in the Antibody for your experiment.