

## anti- TAU antibody

### Product Information

Catalog No.:	CAF50350
Size:	100µg
Form:	liquid
Purification:	Immunogen affinity purified
Purity:	≥95% as determined by SDS-PAGE
Host:	Rabbit
Clonality:	polyclonal
Clone ID:	None
IsoType:	IgG
Storage:	PBS with 0.02% sodium azide and 50% glycerol pH 7.3, -20°C for 12 months (Avoid repeated freeze / thaw cycles.)

### Background

This gene encodes the microtubule-associated protein tau (MAPT) whose transcript undergoes complex, regulated alternative splicing, giving rise to several mRNA species. MAPT transcripts are differentially expressed in the nervous system, depending on stage of neuronal maturation and neuron type. MAPT gene mutations have been associated with several neurodegenerative disorders such as Alzheimer's disease, Pick's disease, frontotemporal dementia, cortico-basal degeneration and progressive supranuclear palsy.

### Immunogen information

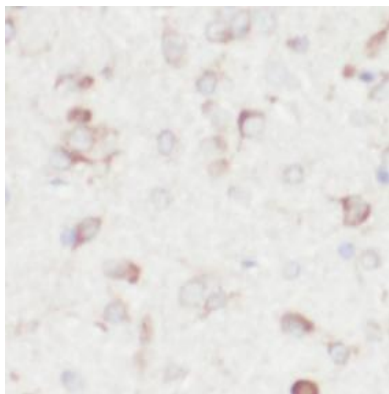
Immunogen:	microtubule-associated protein tau
Synonyms:	DDPAC, FLJ31424, FTDP 17, MAPT, MAPTL, MSTD, MTBT1, MTBT2, Neurofibrillary tangle protein, Paired helical filament tau, PHF tau, PPND, TAU
Observed MW:	Refer to figures
Uniprot ID :	P10636

### Application

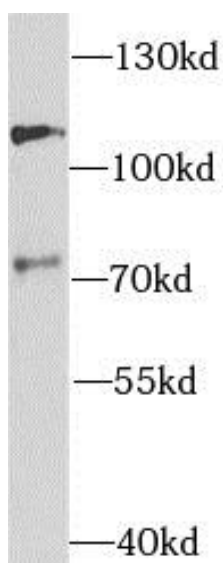
Reactivity:	Human, Mouse, Rat
Tested Application:	ELISA, WB, IHC
Recommended dilution:	WB: 1:500 - 1:2000; IHC: 1:100 - 1:200
Image:	

**This Antibody is for Research Use Only. Not for Diagnostic Procedures.**

This is a sample Antibody manual only. Always refer to the hard copy manual included in the Antibody for your experiment.



Immunohistochemistry of paraffin-embedded human brain tissue slide using CAF50350( TAU Antibody) at dilution of 1:200



rat brain were subjected to SDS PAGE followed by western blot with CAF50350(TAU antibody) at dilution of 1:1000

SAMPLE

ONLY

**This Antibody is for Research Use Only. Not for Diagnostic Procedures.**

This is a sample Antibody manual only. Always refer to the hard copy manual included in the Antibody for your experiment.