

## anti- TEAD1 antibody

### Product Information

Catalog No.:	CAF50352
Size:	100µg
Form:	liquid
Purification:	Immunogen affinity purified
Purity:	≥95% as determined by SDS-PAGE
Host:	Rabbit
Clonality:	polyclonal
IsoType:	IgG
Storage:	PBS with 0.02% sodium azide and 50% glycerol pH 7.3, -20°C for 12 months (Avoid repeated freeze / thaw cycles.)

### Background

This gene encodes a ubiquitous transcriptional enhancer factor that is a member of the TEA/ATTS domain family. This protein directs the transactivation of a wide variety of genes and, in placental cells, also acts as a transcriptional repressor. Mutations in this gene cause Sveinsson's choriorretinal atrophy. Additional transcript variants have been described but their full-length natures have not been experimentally verified.

### Immunogen information

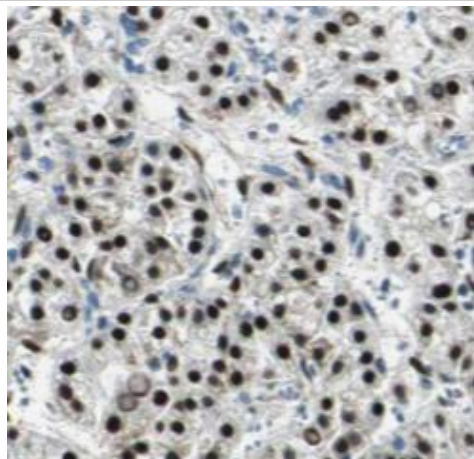
Immunogen:	TEA domain family member 1 (SV40 transcriptional enhancer factor)
Synonyms:	TCF13, TEF1
Observed MW:	50 kDa
UniprotID :	P28347

### Application

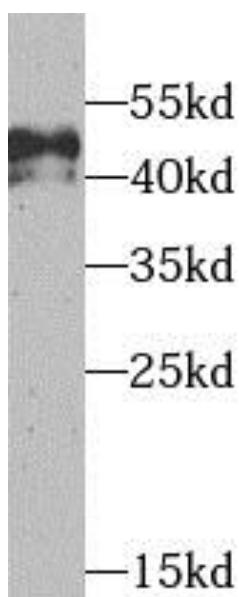
Reactivity:	Human, Mouse, Rat
Tested Application:	ELISA, WB, IHC, IF
Recommended dilution:	WB: 1:500 - 1:2000; IHC: 1:50 - 1:200; IF: 1:50 - 1:200
Image:	

**This Antibody is for Research Use Only. Not for Diagnostic Procedures.**

This is a sample Antibody manual only. Always refer to the hard copy manual included in the Antibody for your experiment.



Immunohistochemical of paraffin-embedded human liver cancer using CAF50352(TEAD1 antibody) at dilution of 1:50



mouse brain tissue were subjected to SDS PAGE followed by western blot with CAF50352(TEAD1 antibody) at dilution of 1:1000

SAMPLE

**This Antibody is for Research Use Only. Not for Diagnostic Procedures.**

This is a sample Antibody manual only. Always refer to the hard copy manual included in the Antibody for your experiment.